

Product datasheet for **CS544826**

Frozen Tissue Sections, Cartilage: femur, distal

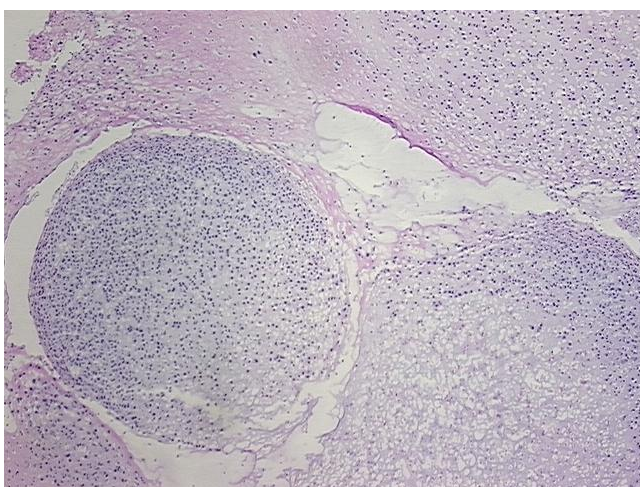
Product data:

Product Type:	Frozen Sections
Disease State:	Cancer
Diagnosis Category:	Sarcoma
Tissue:	Cartilage
Frozen Sample ID:	FR0003ECC6
Case ID:	CI0000018179
Tissue of Origin:	Cartilage: femur, distal
Site of Finding:	Cartilage: femur, distal
Appearance:	T
Sample Diagnosis (from Pathology Verification):	Chondrosarcoma
Normal:	0%
Lesional:	0%
Tumor:	40%
Tumor Hypo/Acellular Stroma:	0%
Tumor Hypercellular Stroma:	30%
Necrosis:	30%
CASE Diagnosis (from medical center path report):	Chondrosarcoma
Age:	42
Gender:	Male
Race:	Not reported
Tumor Grade:	AJCC G3-4: Poorly differentiated or undifferentiated

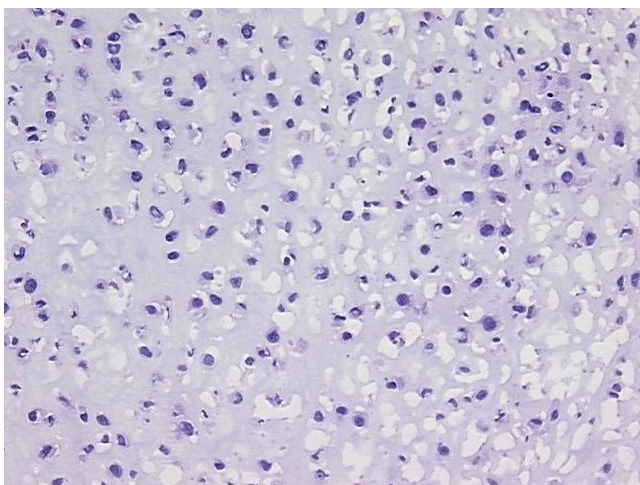


[View online »](#)

Minimum Stage Grouping:	III
T (Extent of Primary Tumor):	T3
N (Lymph node metastasis):	NX
M (Distant metastasis):	MX
Storage:	Store frozen tissue sections at -80°C.
Stability:	All frozen tissue sections are stable for 1 year from date of purchase if stored at -80°C without repeated freeze/thaws.

Product images:

4x Image



20x Image