

## Product datasheet for **CS544051**

### Frozen Tissue Sections, Breast, left

#### Product data:

Product Type:	Frozen Sections
Disease State:	Other Disease
Diagnosis Category:	Ectasia
Tissue:	Breast
Frozen Sample ID:	FR00041297
Case ID:	CI0000017985
Tissue of Origin:	Breast, left
Site of Finding:	Breast
Appearance:	L
Sample Diagnosis (from Pathology Verification):	Ductal ectasia of breast
Normal:	90%
Lesional:	10%
Tumor:	0%
Tumor Hypo/Acellular Stroma:	0%
Tumor Hypercellular Stroma:	0%
Necrosis:	0%
Pathology Verification notes from H&E review:	Non Tumor Structures: 20% Glandular epithelium, 70% Stroma, 10% Adipose tissue
CASE Diagnosis (from medical center path report):	No pathologic disease
Age:	36
Gender:	Female
Race:	White or Caucasian

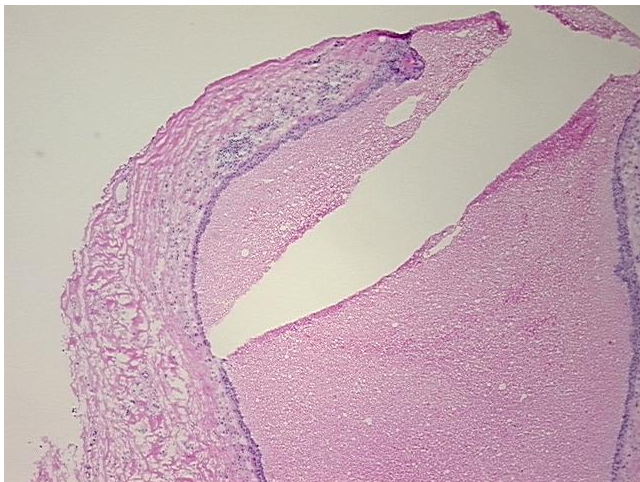


[View online »](#)

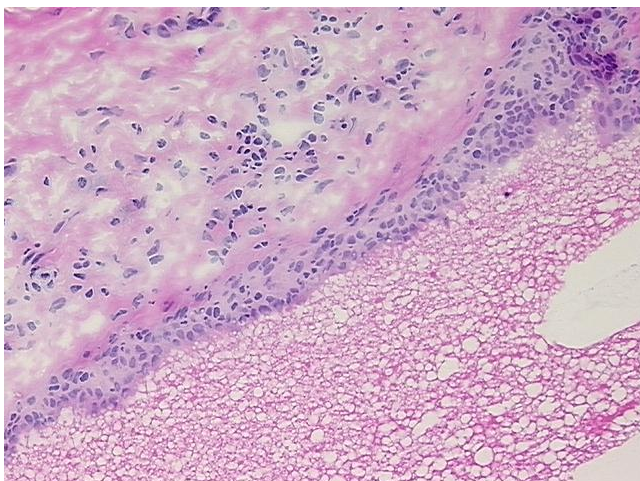
**Storage:** Store frozen tissue sections at -80°C.

**Stability:** All frozen tissue sections are stable for 1 year from date of purchase if stored at -80°C without repeated freeze/thaws.

**Product images:**



4x Image



20x Image