

## Product datasheet for **CS543800**

### Frozen Tissue Sections, Breast

#### Product data:

|   |   |
|---|---|
| Product Type:                                     | Frozen Sections   |
| Disease State:                                    | Other Disease   |
| Diagnosis Category:                               | Fibrocystic Breast  |
| Tissue:   | Breast  |
| Frozen Sample ID:                                 | FR00040DF9  |
| Case ID:  | CI0000017923  |
| Tissue of Origin:                                 | Breast  |
| Site of Finding:                                  | Breast  |
| Appearance:                                       | L   |
| Sample Diagnosis (from Pathology Verification):   | Fibrocystic changes to breast   |
| Normal:   | 60%   |
| Lesional:   | 40%   |
| Tumor:  | 0%  |
| Tumor Hypo/Acellular Stroma:                      | 0%  |
| Tumor Hypercellular Stroma:                       | 0%  |
| Necrosis:   | 0%  |
| Pathology Verification notes from H&E review:     | Non Tumor Structures: 20% Glandular epithelium, 75% Stroma, 5% Adipose tissue |
| CASE Diagnosis (from medical center path report): | Fibrocystic changes to breast   |
| Age:  | 27  |
| Gender:   | Female  |
| Race:   | White or Caucasian  |

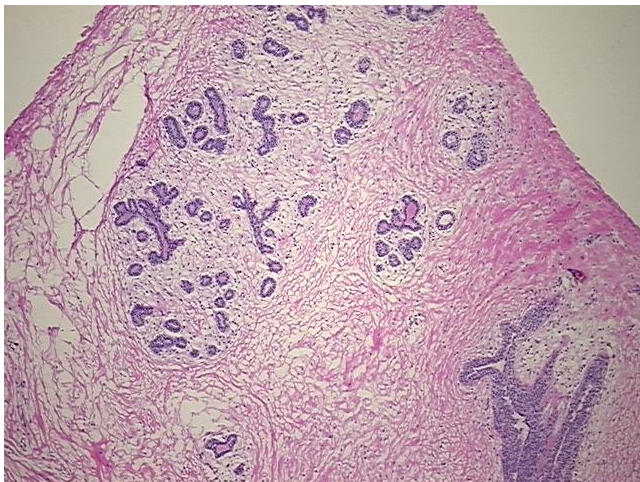


[View online »](#)

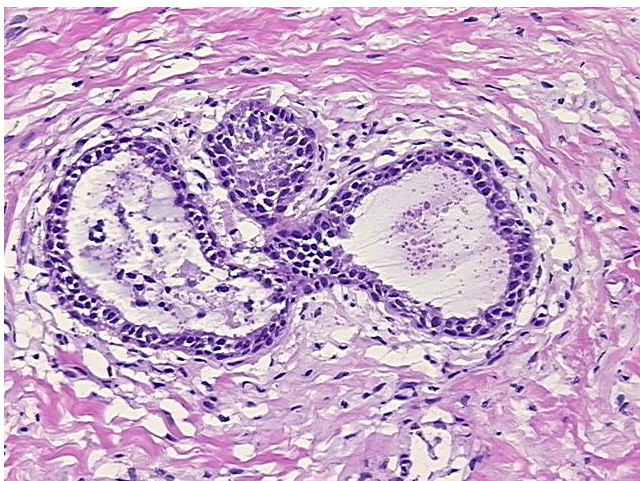
**Storage:** Store frozen tissue sections at -80°C.

**Stability:** All frozen tissue sections are stable for 1 year from date of purchase if stored at -80°C without repeated freeze/thaws.

**Product images:**



4x Image



20x Image