

Product datasheet for **CS542821**

Frozen Tissue Sections, Colon: sigmoid

Product data:

Product Type:	Frozen Sections
Disease State:	Cancer
Diagnosis Category:	Colorectal Cancer
Tissue:	Colon
Frozen Sample ID:	FR00038E5D
Case ID:	CI0000017664
Tissue of Origin:	Colon: sigmoid
Site of Finding:	Lung: right upper lobe
Appearance:	T
Sample Diagnosis (from Pathology Verification):	Adenocarcinoma of colon, mucinous, metastatic
Normal:	0%
Lesional:	0%
Tumor:	5%
Tumor Hypo/Acellular Stroma:	90%
Tumor Hypercellular Stroma:	5%
Necrosis:	0%
Pathology Verification notes from H&E review:	Tumor Stroma (Cellular): Fibroblastic cells; Tumor Stroma (Hypo/Acellular): Mucin



CASE Diagnosis (from medical center path report): Adenocarcinoma of colon, mucinous, metastatic

Age: 65

Gender: Male

Race: White or Caucasian

Tumor Grade: Not Reported

Minimum Stage Grouping: IV

T (Extent of Primary Tumor): TX

N (Lymph node metastasis): NX

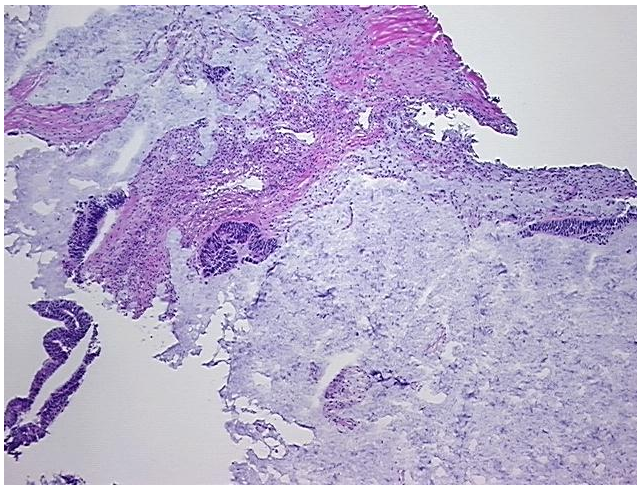
M (Distant metastasis): M1

Diagnostic Test Results: GMS ~ Grocott methenamine silver stain, Positive

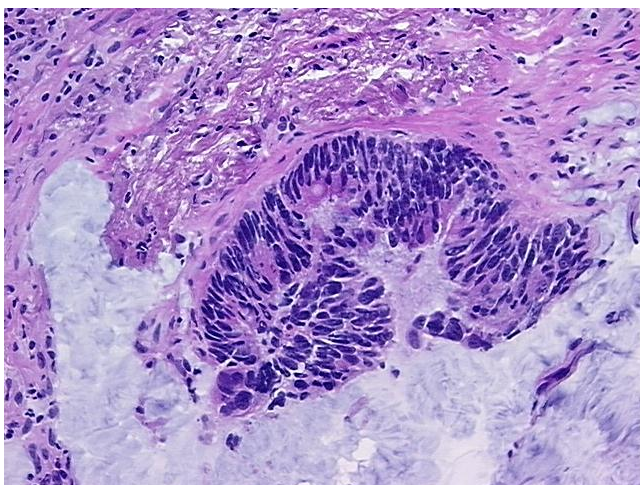
Storage: Store frozen tissue sections at -80°C.

Stability: All frozen tissue sections are stable for 1 year from date of purchase if stored at -80°C without repeated freeze/thaws.

Product images:



4x Image



20x Image