

Product datasheet for **CS542018**

Frozen Tissue Sections, Colon

Product data:

| | |
|--|--|
| Product Type: | Frozen Sections |
| Disease State: | Cancer |
| Diagnosis Category: | Colorectal Cancer |
| Tissue: | Colon |
| Frozen Sample ID: | FR0003616C |
| Case ID: | CI0000017122 |
| Tissue of Origin: | Colon |
| Site of Finding: | Liver |
| Appearance: | T |
| Sample Diagnosis (from Pathology Verification): | Adenocarcinoma of colon, metastatic |
| Normal: | 0% |
| Lesional: | 0% |
| Tumor: | 30% |
| Tumor Hypo/Acellular Stroma: | 0% |
| Tumor Hypercellular Stroma: | 35% |
| Necrosis: | 35% |
| Pathology Verification notes from H&E review: | Tumor Stroma (Cellular): Desmoplastic reaction |



CASE Diagnosis (from medical center path report): Adenocarcinoma of colon, metastatic

Age: 49

Gender: Female

Race: White or Caucasian

Tumor Grade: AJCC G2: Moderately differentiated

Minimum Stage Grouping: IV

T (Extent of Primary Tumor): TX

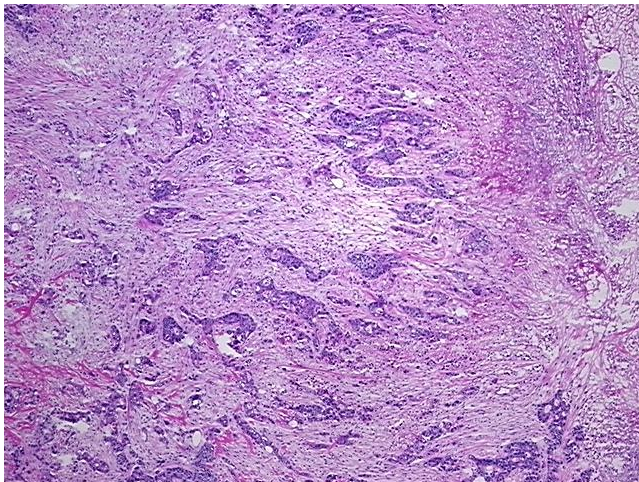
N (Lymph node metastasis): NX

M (Distant metastasis): M1

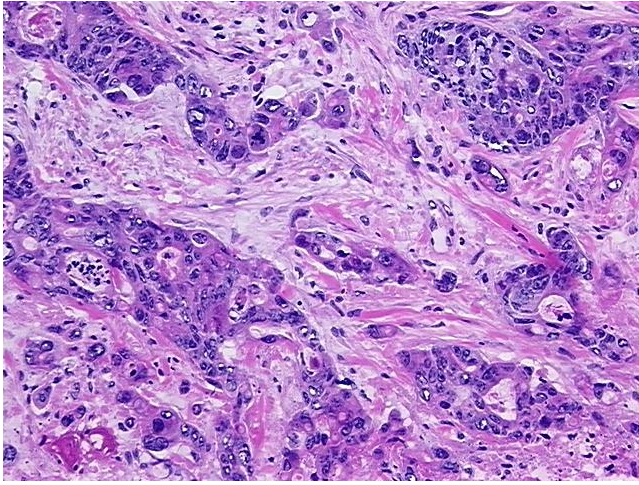
Storage: Store frozen tissue sections at -80°C .

Stability: All frozen tissue sections are stable for 1 year from date of purchase if stored at -80°C without repeated freeze/thaws.

Product images:



4x Image



20x Image