

Product datasheet for CS541911

Frozen Tissue Sections, Stomach

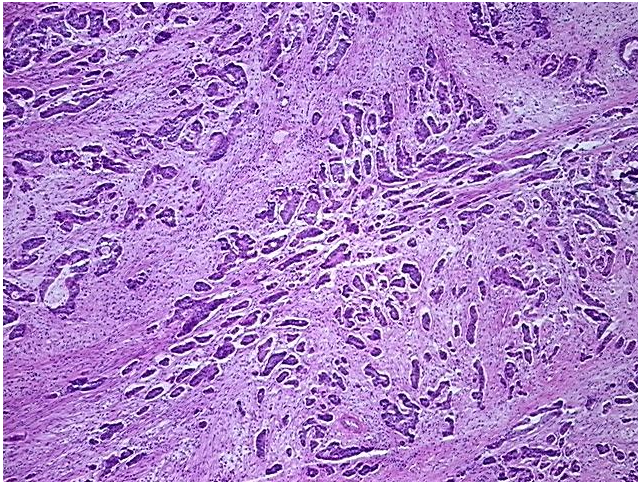
Product data:

Product Type:	Frozen Sections
Disease State:	Cancer
Diagnosis Category:	Stomach Cancer
Tissue:	Stomach
Frozen Sample ID:	FR5B34311E
Case ID:	CI0000017069
Tissue of Origin:	Stomach
Site of Finding:	Stomach
Appearance:	T
Sample Diagnosis (from Pathology Verification):	Adenocarcinoma of stomach
Normal:	10%
Lesional:	0%
Tumor:	65%
Tumor Hypo/Acellular Stroma:	0%
Tumor Hypercellular Stroma:	25%
Necrosis:	0%
Pathology Verification notes from H&E review:	Tumor Stroma (Cellular): Desmoplastic reaction, Inflammatory cells; Inflammation: Moderate Mixed inflammatory infiltrate; Other Features/Comments: Tumor area: 8 mm x 5 mm
CASE Diagnosis (from medical center path report):	Adenocarcinoma of stomach
Age:	72
Gender:	Male
Race:	Black or African American

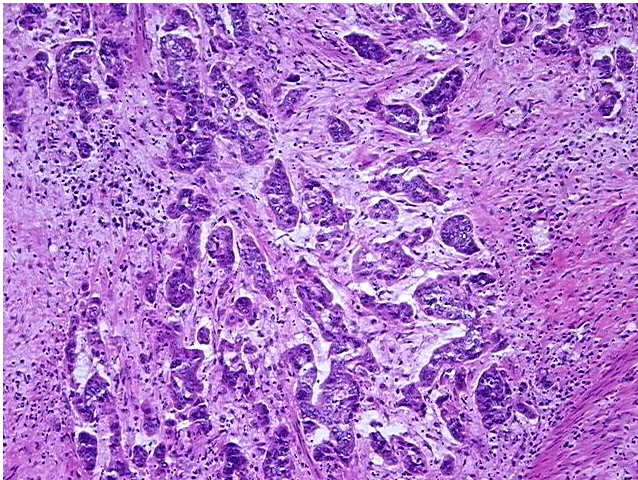


[View online »](#)

Tumor Grade:	AJCC G3: Poorly differentiated
Minimum Stage Grouping:	IIIA
T (Extent of Primary Tumor):	T3
N (Lymph node metastasis):	N1
M (Distant metastasis):	MX
Storage:	Store frozen tissue sections at -80°C.
Stability:	All frozen tissue sections are stable for 1 year from date of purchase if stored at -80°C without repeated freeze/thaws.

Product images:

4x Image



20x Image