

## Product datasheet for **CS541181**

### Frozen Tissue Sections, Ileum

#### Product data:

Product Type:	Frozen Sections
Disease State:	Other Disease
Diagnosis Category:	Inflammatory Bowel Disease (IBD)
Tissue:	Small intestine
Frozen Sample ID:	FR0003DD02
Case ID:	CI0000016759
Tissue of Origin:	Ileum
Site of Finding:	Ileum
Appearance:	L
Sample Diagnosis (from Pathology Verification):	Crohns disease
Normal:	0%
Lesional:	100%
Tumor:	0%
Tumor Hypo/Acellular Stroma:	0%
Tumor Hypercellular Stroma:	0%
Necrosis:	0%
Pathology Verification notes from H&E review:	Inflammation: Severe Mixed inflammatory infiltrate; Non Tumor Structures: 50% Mucosa, 20% Submucosa, 30% Muscle
CASE Diagnosis (from medical center path report):	Crohns disease
Age:	19
Gender:	Female
Race:	White or Caucasian

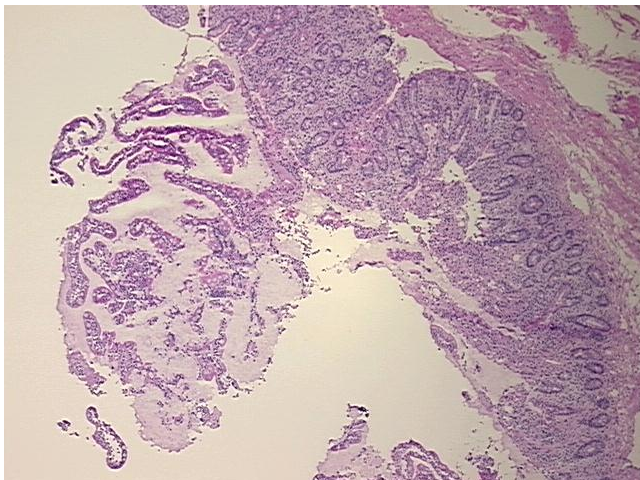


[View online »](#)

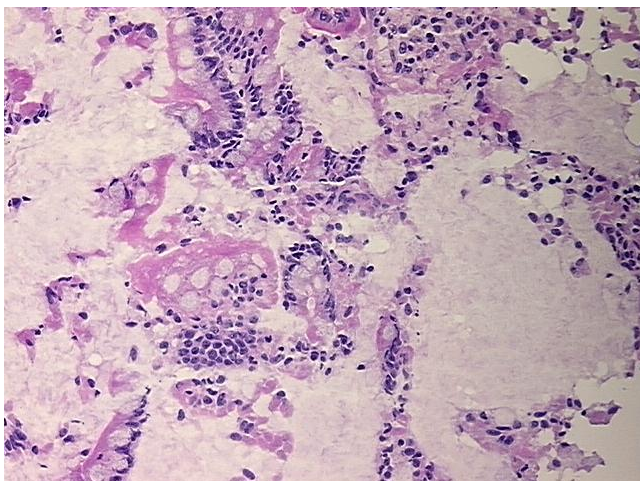
**Storage:** Store frozen tissue sections at -80°C.

**Stability:** All frozen tissue sections are stable for 1 year from date of purchase if stored at -80°C without repeated freeze/thaws.

**Product images:**



4x Image



20x Image