

## Product datasheet for **CS540514**

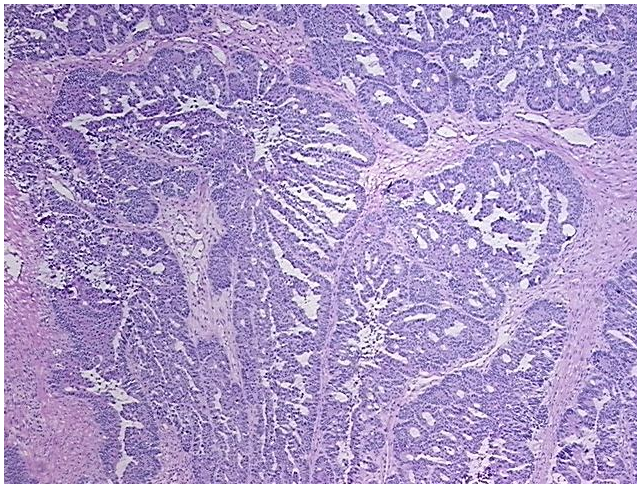
### Frozen Tissue Sections, Colon: sigmoid

#### Product data:

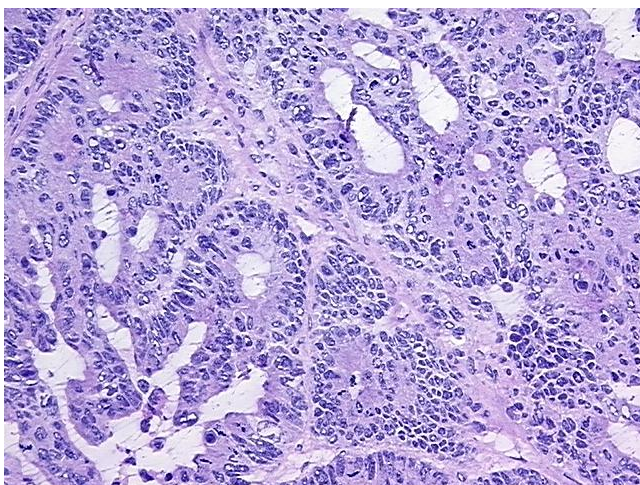
Product Type:	Frozen Sections
Disease State:	Cancer
Diagnosis Category:	Colorectal Cancer
Tissue:	Colon
Frozen Sample ID:	FR5B33D666
Case ID:	CI0000016540
Tissue of Origin:	Colon: sigmoid
Site of Finding:	Colon: sigmoid
Appearance:	T
Sample Diagnosis (from Pathology Verification):	Adenocarcinoma of colon
Normal:	20%
Lesional:	0%
Tumor:	65%
Tumor Hypo/Acellular Stroma:	0%
Tumor Hypercellular Stroma:	15%
Necrosis:	0%
CASE Diagnosis (from medical center path report):	Adenocarcinoma of colon
Age:	46
Gender:	Female
Race:	White or Caucasian
Tumor Grade:	AJCC G2: Moderately differentiated


[View online »](#)

Minimum Stage Grouping:	IIA
T (Extent of Primary Tumor):	T3
N (Lymph node metastasis):	N0
M (Distant metastasis):	MX
Diagnostic Test Results:	Proliferation index ~ PI,High; ERBB1 ~ EGFR ~ Epidermal growth factor receptor ! by IHC,Negative; DNA ploidy ~ Cell ploidy,Aneuploid: DI not 0.5 or 1.0 or 2.0
Storage:	Store frozen tissue sections at -80°C.
Stability:	All frozen tissue sections are stable for 1 year from date of purchase if stored at -80°C without repeated freeze/thaws.

**Product images:**


4x Image



20x Image