

## Product datasheet for **CS540512**

### Frozen Tissue Sections, Small intestine

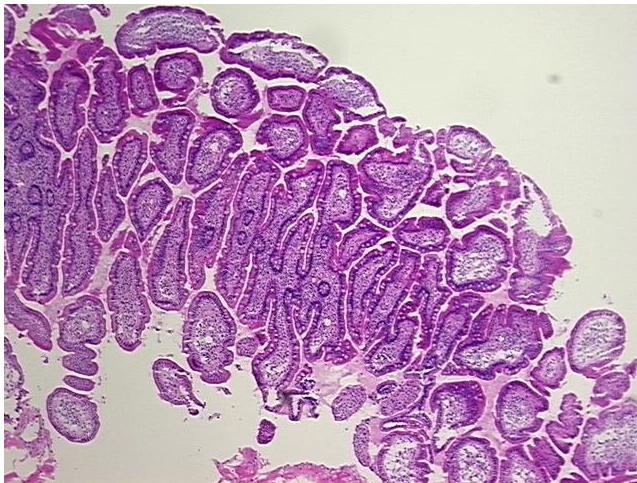
#### Product data:

Product Type:	Frozen Sections
Disease State:	Normal
Diagnosis Category:	Normal
Tissue:	Small intestine
Frozen Sample ID:	FR00035CCE
Case ID:	CI0000016540
Tissue of Origin:	Small intestine
Site of Finding:	Small intestine
Appearance:	R
Sample Diagnosis (from Pathology Verification):	Within normal limits
Normal:	100%
Lesional:	0%
Tumor:	0%
Tumor Hypo/Acellular Stroma:	0%
Tumor Hypercellular Stroma:	0%
Necrosis:	0%
Pathology Verification notes from H&E review:	Non Tumor Structures: 20% Mucosa, 10% Submucosa, 70% Muscle
CASE Diagnosis (from medical center path report):	Adenocarcinoma of colon
Age:	46
Gender:	Female
Race:	White or Caucasian

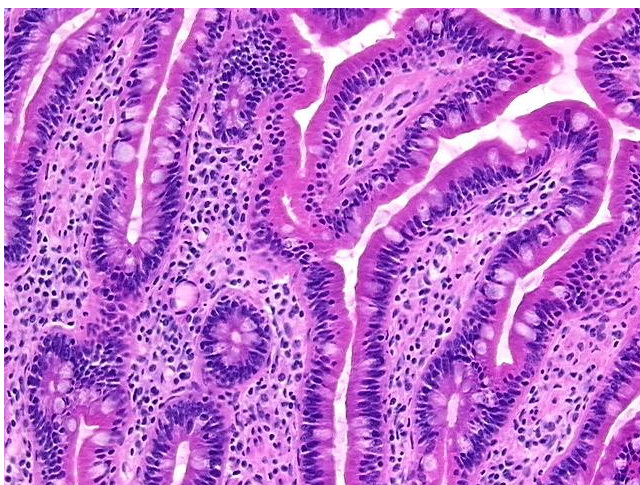

[View online »](#)

<b>Tumor Grade:</b>	AJCC G2: Moderately differentiated
<b>Minimum Stage Grouping:</b>	IIA
<b>T (Extent of Primary Tumor):</b>	T3
<b>N (Lymph node metastasis):</b>	N0
<b>M (Distant metastasis):</b>	MX
<b>Diagnostic Test Results:</b>	Proliferation index ~ PI,High; ERBB1 ~ EGFR ~ Epidermal growth factor receptor ! by IHC,Negative; DNA ploidy ~ Cell ploidy,Aneuploid: DI not 0.5 or 1.0 or 2.0
<b>Storage:</b>	Store frozen tissue sections at -80°C.
<b>Stability:</b>	All frozen tissue sections are stable for 1 year from date of purchase if stored at -80°C without repeated freeze/thaws.

### Product images:



4x Image



20x Image