

Product datasheet for **CS539823**

Frozen Tissue Sections, Breast

Product data:

| | |
|---------------------------------------------------|--------------------------------------------------------------------------------|
| Product Type: | Frozen Sections |
| Disease State: | Other Disease |
| Diagnosis Category: | Fibrocystic Breast |
| Tissue: | Breast |
| Frozen Sample ID: | FR0003E24D |
| Case ID: | CI0000015737 |
| Tissue of Origin: | Breast |
| Site of Finding: | Breast |
| Appearance: | L |
| Sample Diagnosis (from Pathology Verification): | Fibrocystic changes to breast |
| Normal: | 95% |
| Lesional: | 5% |
| Tumor: | 0% |
| Tumor Hypo/Acellular Stroma: | 0% |
| Tumor Hypercellular Stroma: | 0% |
| Necrosis: | 0% |
| Pathology Verification notes from H&E review: | Non Tumor Structures: 20% Glandular epithelium, 40% Stroma, 40% Adipose tissue |
| CASE Diagnosis (from medical center path report): | No pathologic disease |
| Age: | 54 |
| Gender: | Female |
| Race: | Black or African American |

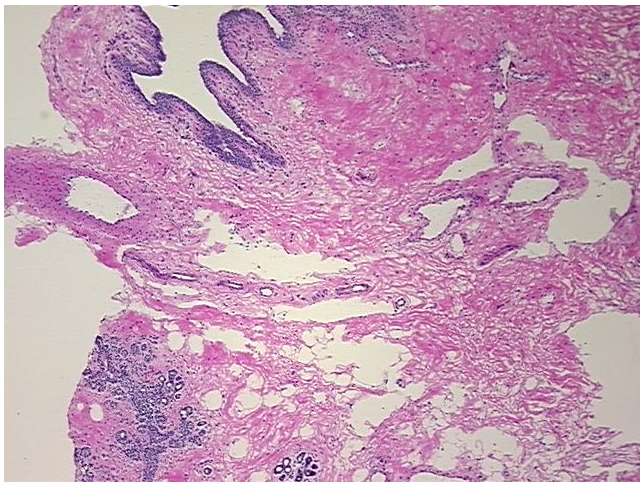


[View online »](#)

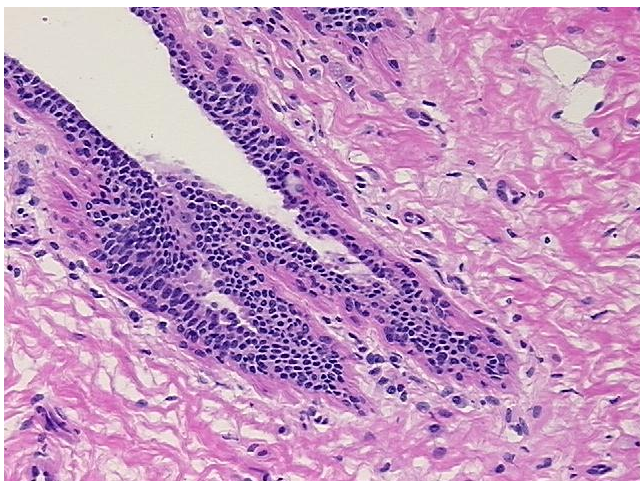
Storage: Store frozen tissue sections at -80°C.

Stability: All frozen tissue sections are stable for 1 year from date of purchase if stored at -80°C without repeated freeze/thaws.

Product images:



4x Image



20x Image