

## Product datasheet for **CS539820**

### Frozen Tissue Sections, Colon: right

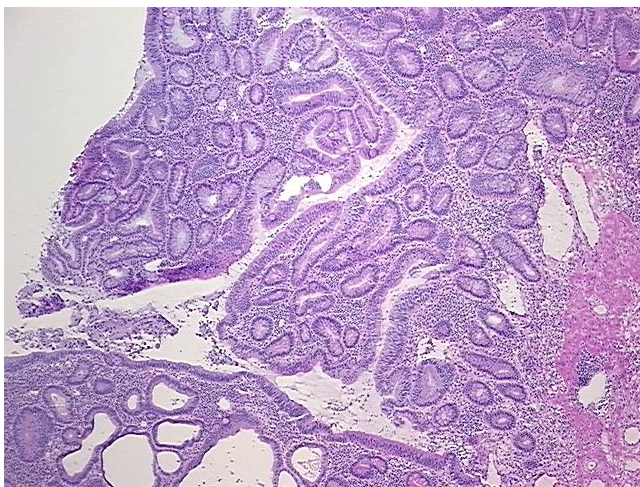
#### Product data:

|   |  |
|---|--|
| Product Type:                                     | Frozen Sections  |
| Disease State:                                    | Other Disease  |
| Diagnosis Category:                               | Benign Tumors  |
| Tissue:   | Colon  |
| Frozen Sample ID:                                 | FR0003E63A   |
| Case ID:  | CI0000015734   |
| Tissue of Origin:                                 | Colon: right   |
| Site of Finding:                                  | Colon: right   |
| Appearance:                                       | T  |
| Sample Diagnosis (from Pathology Verification):   | Adenoma of colon   |
| Normal:   | 20%  |
| Lesional:   | 0%   |
| Tumor:  | 60%  |
| Tumor Hypo/Acellular Stroma:                      | 0%   |
| Tumor Hypercellular Stroma:                       | 20%  |
| Necrosis:   | 0%   |
| Pathology Verification notes from H&E review:     | Tumor: tubular adenoma with high grade dysplasia, no carcinoma identified in this section; Tumor Stroma (Cellular): Inflammatory cells; Inflammation: Moderate Mixed inflammatory infiltrate |
| CASE Diagnosis (from medical center path report): | Adenocarcinoma of colon  |
| Age:  | 54   |
| Gender:   | Male   |

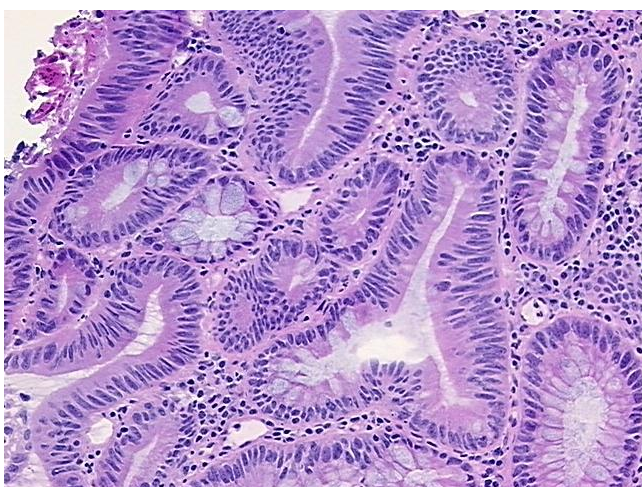


[View online »](#)

|                              |  |
|------------------------------|--|
| Race:                        | Black or African American  |
| Tumor Grade:                 | AJCC G2: Moderately differentiated   |
| Minimum Stage Grouping:      | IIA  |
| T (Extent of Primary Tumor): | T3   |
| N (Lymph node metastasis):   | N0   |
| M (Distant metastasis):      | MX   |
| Storage:                     | Store frozen tissue sections at -80°C.   |
| Stability:                   | All frozen tissue sections are stable for 1 year from date of purchase if stored at -80°C without repeated freeze/thaws. |

**Product images:**

4x Image



20x Image