

Product datasheet for **CS539741**

Frozen Tissue Sections, Uterus

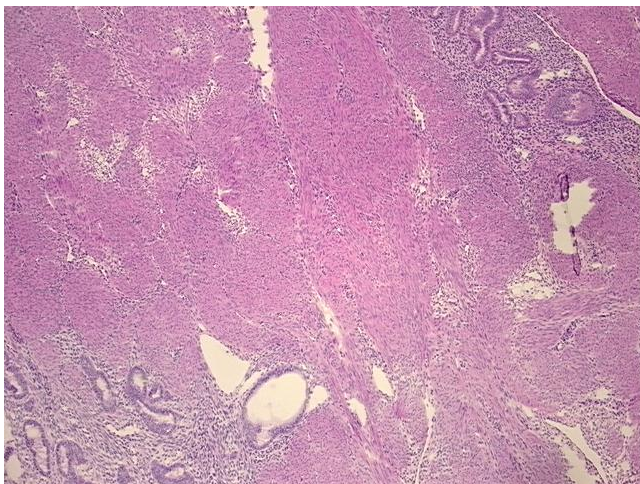
Product data:

Product Type:	Frozen Sections
Disease State:	Other Disease
Diagnosis Category:	Adenosis
Tissue:	Myometrium
Frozen Sample ID:	FR0003A5E8
Case ID:	CI0000015695
Tissue of Origin:	Uterus
Site of Finding:	Uterus
Appearance:	L
Sample Diagnosis (from Pathology Verification):	Adenomyosis of myometrium
Normal:	90%
Lesional:	10%
Tumor:	0%
Tumor Hypo/Acellular Stroma:	0%
Tumor Hypercellular Stroma:	0%
Necrosis:	0%
Pathology Verification notes from H&E review:	Non Tumor Structures: 15% Glands, 5% Stroma, 80% Myometrium; Other Features/Comments: Secretory endometrium
CASE Diagnosis (from medical center path report):	Leiomyoma of myometrium
Age:	38
Gender:	Female
Race:	White or Caucasian

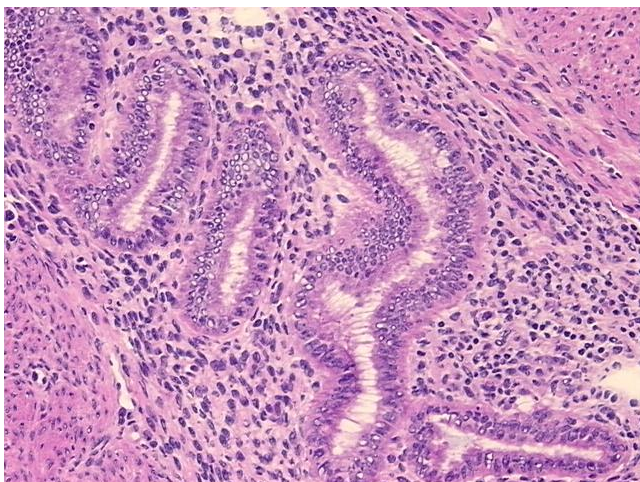


[View online »](#)

Tumor Grade:	Not Reported
Minimum Stage Grouping:	Not Reported
T (Extent of Primary Tumor):	Not Reported
N (Lymph node metastasis):	Not Reported
M (Distant metastasis):	Not Reported
Storage:	Store frozen tissue sections at -80°C.
Stability:	All frozen tissue sections are stable for 1 year from date of purchase if stored at -80°C without repeated freeze/thaws.

Product images:

4x Image



20x Image