

Product datasheet for **CS539704**

Frozen Tissue Sections, Breast

Product data:

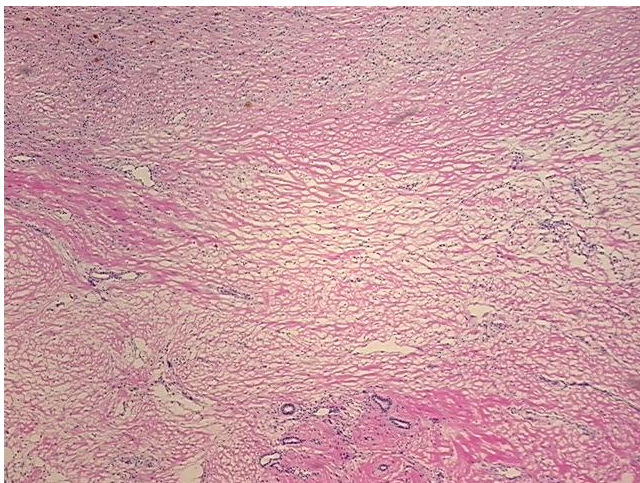
| | |
|---|--|
| Product Type: | Frozen Sections |
| Disease State: | Other Disease |
| Diagnosis Category: | Biopsy Site Changes |
| Tissue: | Breast |
| Frozen Sample ID: | FR0003A59E |
| Case ID: | CI0000015684 |
| Tissue of Origin: | Breast |
| Site of Finding: | Breast |
| Appearance: | L |
| Sample Diagnosis (from Pathology Verification): | Biopsy cavity of breast |
| Normal: | 50% |
| Lesional: | 50% |
| Tumor: | 0% |
| Tumor Hypo/Acellular Stroma: | 0% |
| Tumor Hypercellular Stroma: | 0% |
| Necrosis: | 0% |
| Pathology Verification notes from H&E review: | Non Tumor Structures: 20% Glandular epithelium, 70% Stroma, 10% Adipose tissue |
| CASE Diagnosis (from medical center path report): | Adenocarcinoma of breast, ductal |
| Age: | 39 |
| Gender: | Female |
| Race: | Black or African American |



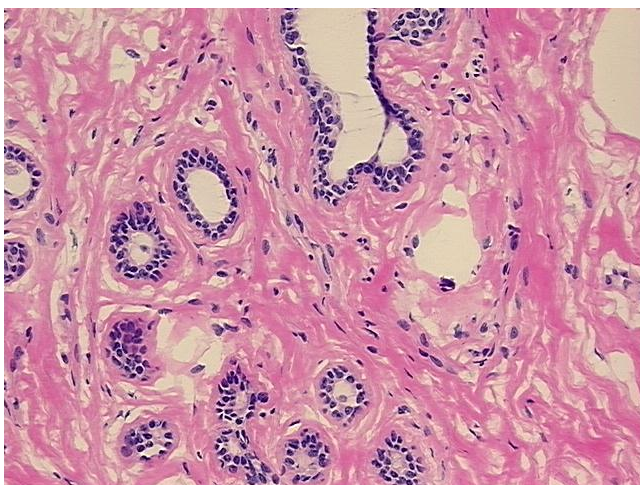
[View online »](#)

| | |
|------------------------------|--|
| Tumor Grade: | Not Reported |
| Minimum Stage Grouping: | I |
| T (Extent of Primary Tumor): | TX |
| N (Lymph node metastasis): | N0 |
| M (Distant metastasis): | MX |
| Diagnostic Test Results: | Cytokeratin (Pan) ~ Keratin, Pan ! by IHC,Negative; Progesterone receptor ~ PR ! by IHC,Positive; Estrogen receptor ~ ER ! by IHC,Positive; HER2 ~ ERBB2 ~ Neu ! by IHC,Negative |
| Storage: | Store frozen tissue sections at -80°C. |
| Stability: | All frozen tissue sections are stable for 1 year from date of purchase if stored at -80°C without repeated freeze/thaws. |

Product images:



4x Image



20x Image