

Product datasheet for **CS539654**

Frozen Tissue Sections, Smooth muscle

Product data:

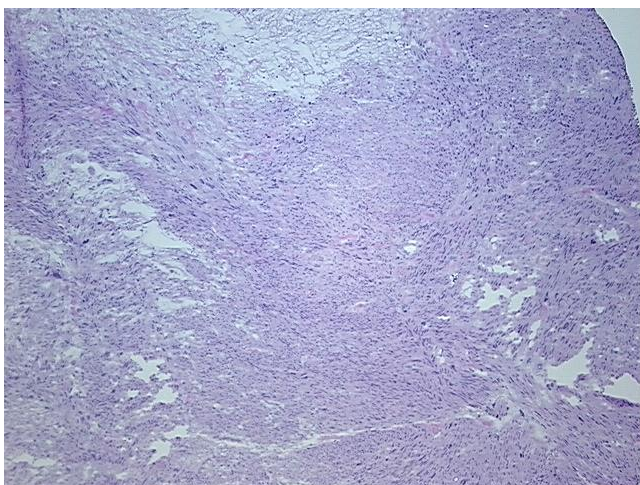
Product Type:	Frozen Sections
Disease State:	Cancer
Diagnosis Category:	Sarcoma
Tissue:	Muscle
Frozen Sample ID:	FR0003A423
Case ID:	CI0000015674
Tissue of Origin:	Smooth muscle
Site of Finding:	Retroperitoneal region
Appearance:	T
Sample Diagnosis (from Pathology Verification):	Leiomyosarcoma
Normal:	0%
Lesional:	0%
Tumor:	30%
Tumor Hypo/Acellular Stroma:	70%
Tumor Hypercellular Stroma:	0%
Necrosis:	0%
Pathology Verification notes from H&E review:	Tumor Stroma (Hypo/Acellular): Fibrosis, Myxoid
CASE Diagnosis (from medical center path report):	Leiomyosarcoma
Age:	41
Gender:	Female
Race:	White or Caucasian



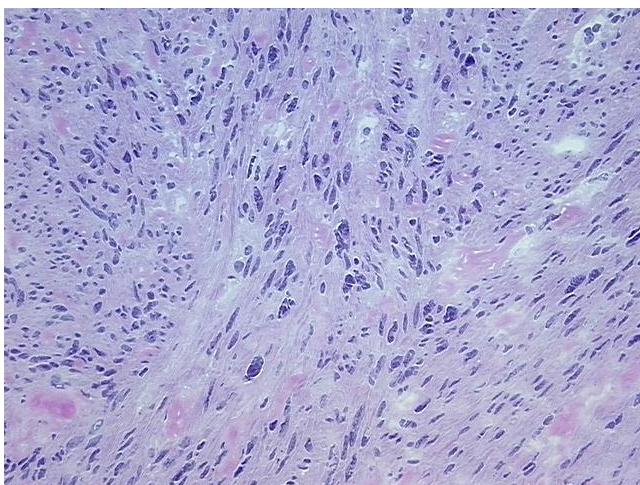
[View online »](#)

Tumor Grade:	AJCC G1: Well differentiated
Minimum Stage Grouping:	I
T (Extent of Primary Tumor):	T2b
N (Lymph node metastasis):	NX
M (Distant metastasis):	MX
Diagnostic Test Results:	Smooth muscle actin ~ SMA ~ Alpha-SMA ! by IHC,Positive; S100 protein,Negative; MSA ~ Muscle Specific Actin,Positive; CD117 ~ C-kit ~ SCFR ! by IHC,Negative
Storage:	Store frozen tissue sections at -80°C.
Stability:	All frozen tissue sections are stable for 1 year from date of purchase if stored at -80°C without repeated freeze/thaws.

Product images:



4x Image



20x Image