

## Product datasheet for CS539610

### Frozen Tissue Sections, Colon: sigmoid

#### Product data:

Product Type:	Frozen Sections
Disease State:	Cancer
Diagnosis Category:	Colorectal Cancer
Tissue:	Colon
Frozen Sample ID:	FR0003E084
Case ID:	CI0000015651
Tissue of Origin:	Colon: sigmoid
Site of Finding:	Colon: sigmoid
Appearance:	T
Sample Diagnosis (from Pathology Verification):	Adenocarcinoma of colon
Normal:	35%
Lesional:	0%
Tumor:	40%
Tumor Hypo/Acellular Stroma:	0%
Tumor Hypercellular Stroma:	20%
Necrosis:	5%
CASE Diagnosis (from medical center path report):	Adenocarcinoma of colon
Age:	80
Gender:	Male
Race:	Black or African American
Tumor Grade:	AJCC G2: Moderately differentiated


[View online »](#)

**Minimum Stage Grouping:** IIIA

**T (Extent of Primary Tumor):** T3

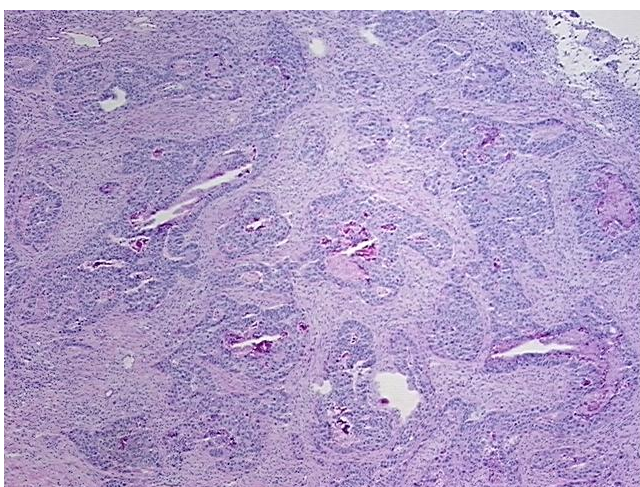
**N (Lymph node metastasis):** N1

**M (Distant metastasis):** MX

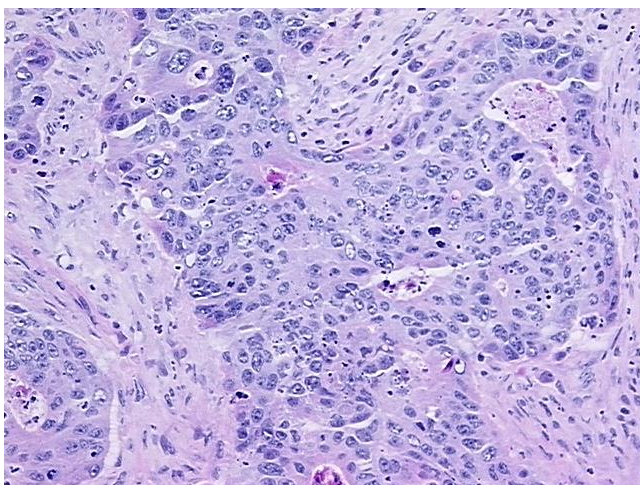
**Storage:** Store frozen tissue sections at -80°C.

**Stability:** All frozen tissue sections are stable for 1 year from date of purchase if stored at -80°C without repeated freeze/thaws.

### Product images:



4x Image



20x Image