

Product datasheet for **CS539540**

Frozen Tissue Sections, Small intestine

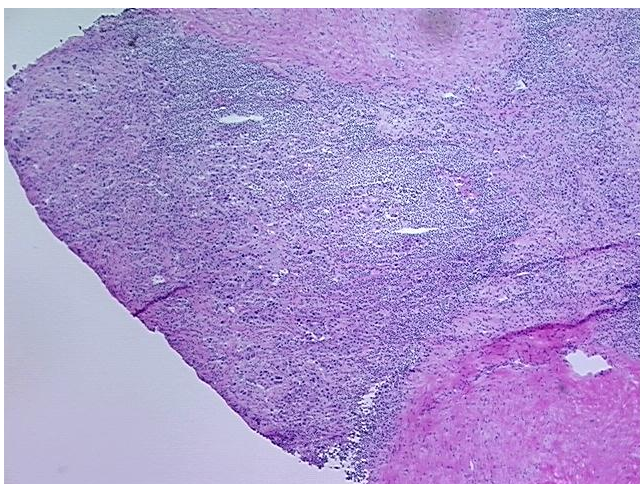
Product data:

Product Type:	Frozen Sections
Disease State:	Cancer
Diagnosis Category:	Carcinoid/Neuroendocrine Tumors
Tissue:	Small intestine
Frozen Sample ID:	FR00038DC3
Case ID:	CI0000015625
Tissue of Origin:	Small intestine
Site of Finding:	Small intestine
Appearance:	T
Sample Diagnosis (from Pathology Verification):	Tumor of small intestine, carcinoid
Normal:	60%
Lesional:	0%
Tumor:	30%
Tumor Hypo/Acellular Stroma:	0%
Tumor Hypercellular Stroma:	10%
Necrosis:	0%
Pathology Verification notes from H&E review:	Non Tumor Structures: 100% Muscle
CASE Diagnosis (from medical center path report):	Tumor of small intestine, carcinoid
Age:	64
Gender:	Female
Race:	White or Caucasian

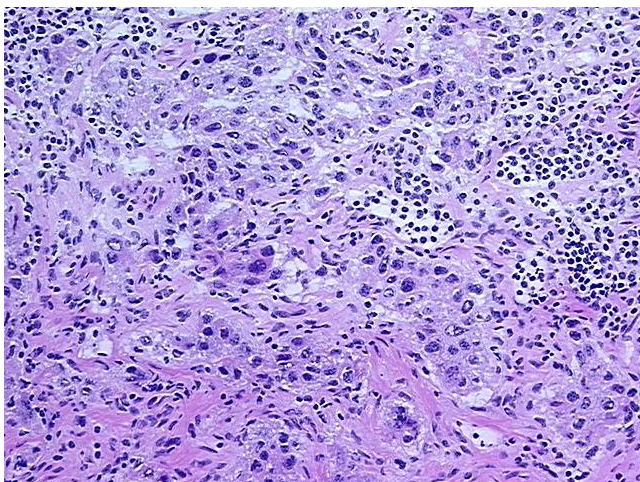


[View online »](#)

Tumor Grade:	Not Reported
Minimum Stage Grouping:	Not Reported
T (Extent of Primary Tumor):	Not Reported
N (Lymph node metastasis):	Not Reported
M (Distant metastasis):	Not Reported
Storage:	Store frozen tissue sections at -80°C.
Stability:	All frozen tissue sections are stable for 1 year from date of purchase if stored at -80°C without repeated freeze/thaws.

Product images:

4x Image



20x Image