

## Product datasheet for **CS539460**

### Frozen Tissue Sections, Lung

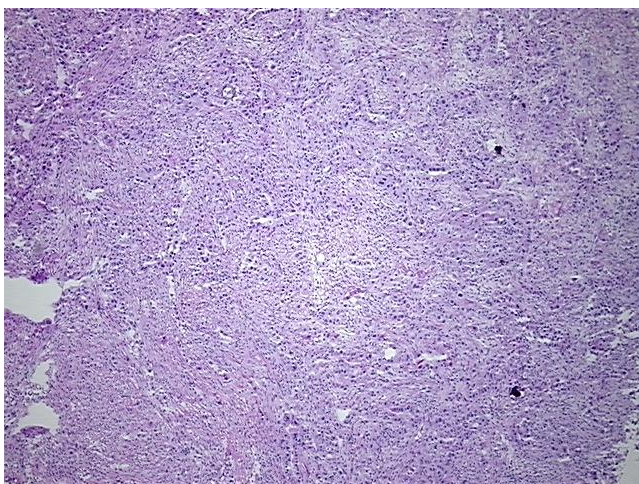
#### Product data:

Product Type:	Frozen Sections
Disease State:	Cancer
Diagnosis Category:	Lung Cancer
Tissue:	Lung
Frozen Sample ID:	FR0003A457
Case ID:	CI0000015598
Tissue of Origin:	Lung
Site of Finding:	Lung
Appearance:	T
Sample Diagnosis (from Pathology Verification):	Carcinoma of lung, adenosquamous
Normal:	15%
Lesional:	0%
Tumor:	65%
Tumor Hypo/Acellular Stroma:	0%
Tumor Hypercellular Stroma:	20%
Necrosis:	0%
Pathology Verification notes from H&E review:	Tumor Stroma (Cellular): Desmoplastic reaction, Fibroblastic cells, Inflammatory cells
CASE Diagnosis (from medical center path report):	Carcinoma of lung, adenosquamous
Age:	77
Gender:	Female
Race:	Not reported

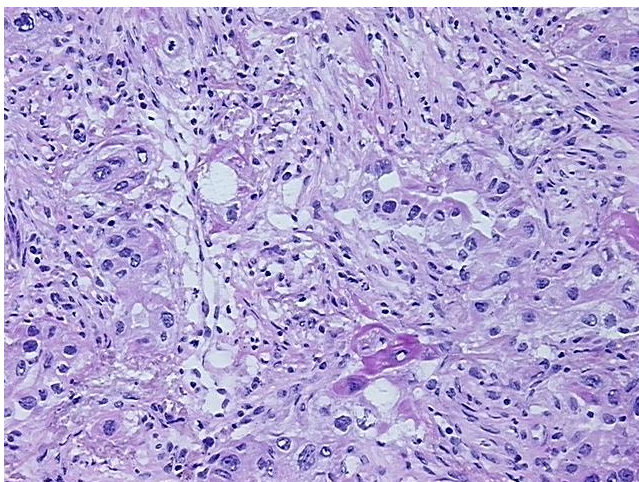

[View online »](#)

<b>Tumor Grade:</b>	AJCC G2: Moderately differentiated
<b>Minimum Stage Grouping:</b>	IA
<b>T (Extent of Primary Tumor):</b>	T1
<b>N (Lymph node metastasis):</b>	N0
<b>M (Distant metastasis):</b>	MX
<b>Storage:</b>	Store frozen tissue sections at -80°C.
<b>Stability:</b>	All frozen tissue sections are stable for 1 year from date of purchase if stored at -80°C without repeated freeze/thaws.

### Product images:



4x Image



20x Image