

Product datasheet for **CS539433**

Frozen Tissue Sections, Lung: left upper lobe

Product data:

Product Type:	Frozen Sections
Disease State:	Cancer
Diagnosis Category:	Lung Cancer
Tissue:	Lung
Frozen Sample ID:	FR00038A3D
Case ID:	CI0000015589
Tissue of Origin:	Lung: left upper lobe
Site of Finding:	Lung: left upper lobe
Appearance:	T
Sample Diagnosis (from Pathology Verification):	Adenocarcinoma of lung
Normal:	85%
Lesional:	0%
Tumor:	10%
Tumor Hypo/Acellular Stroma:	0%
Tumor Hypercellular Stroma:	5%
Necrosis:	0%
Pathology Verification notes from H&E review:	Tumor: with acinar and bronchioalveolar patterns; Tumor Stroma (Cellular): Desmoplastic reaction; Non Tumor Structures: 90% Alveoli, 10% Fibrovascular septa



CASE Diagnosis (from medical center path report): Adenocarcinoma of lung

Age: 71

Gender: Female

Race: White or Caucasian

Tumor Grade: AJCC GI: Well differentiated

Minimum Stage Grouping: IB

T (Extent of Primary Tumor): T2

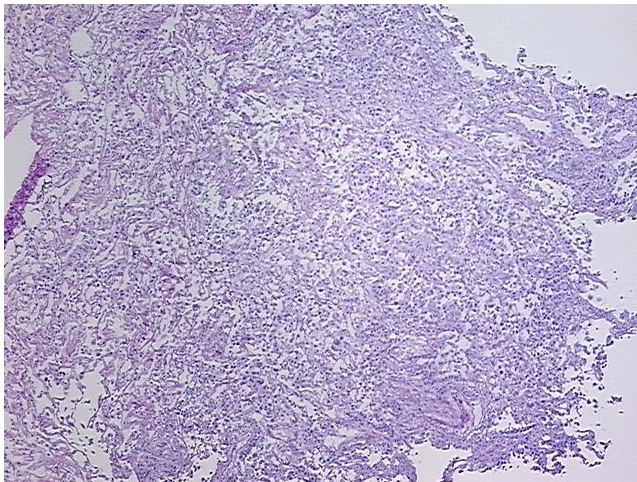
N (Lymph node metastasis): N0

M (Distant metastasis): MX

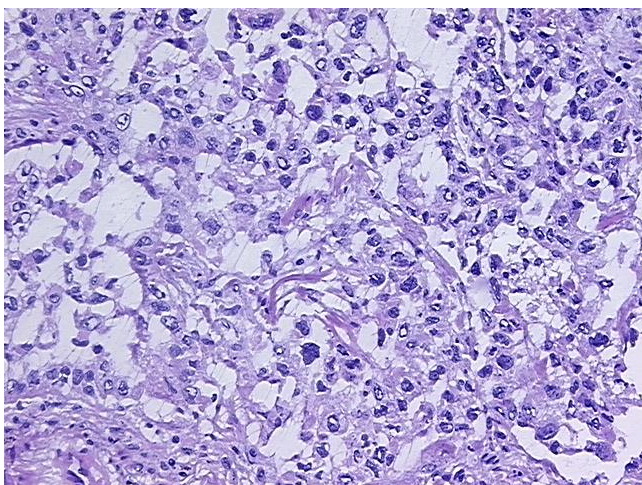
Storage: Store frozen tissue sections at -80°C.

Stability: All frozen tissue sections are stable for 1 year from date of purchase if stored at -80°C without repeated freeze/thaws.

Product images:



4x Image



20x Image