

Product datasheet for CS537941

Frozen Tissue Sections, Ovary: left

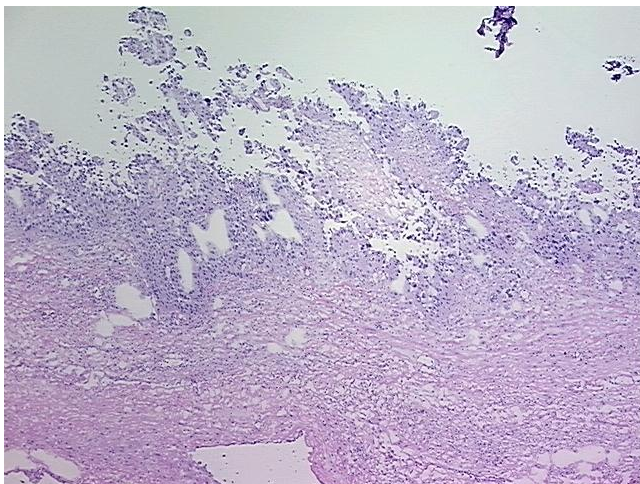
Product data:

| | |
|---|---|
| Product Type: | Frozen Sections |
| Disease State: | Cancer |
| Diagnosis Category: | Ovarian Cancer |
| Tissue: | Ovary |
| Frozen Sample ID: | FR00036B8D |
| Case ID: | CI0000015219 |
| Tissue of Origin: | Ovary: left |
| Site of Finding: | Ovary: left |
| Appearance: | T |
| Sample Diagnosis (from Pathology Verification): | Adenocarcinoma of ovary, serous |
| Normal: | 40% |
| Lesional: | 0% |
| Tumor: | 25% |
| Tumor Hypo/Acellular Stroma: | 10% |
| Tumor Hypercellular Stroma: | 25% |
| Necrosis: | 0% |
| Pathology Verification notes from H&E review: | Tumor Stroma (Cellular): Desmoplastic reaction; Tumor Stroma (Hypo/Acellular): Fibrosis |
| CASE Diagnosis (from medical center path report): | Adenocarcinoma of ovary, serous |
| Age: | 49 |
| Gender: | Female |
| Race: | White or Caucasian |

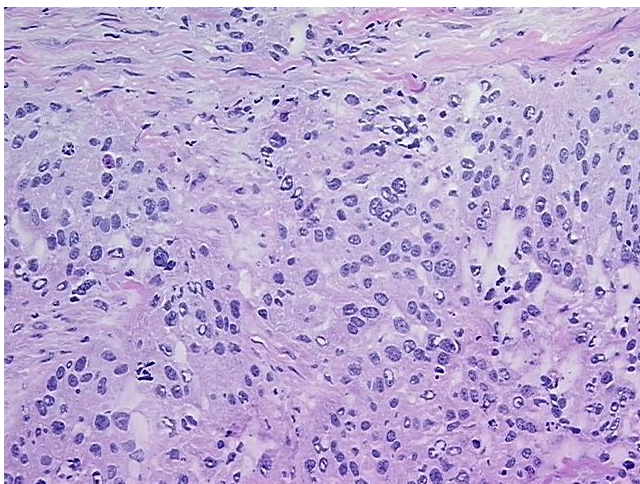


[View online »](#)

| | |
|------------------------------|--|
| Tumor Grade: | FIGO G3: Poorly differentiated |
| Minimum Stage Grouping: | IC |
| T (Extent of Primary Tumor): | T1c |
| N (Lymph node metastasis): | N0 |
| M (Distant metastasis): | MX |
| Storage: | Store frozen tissue sections at -80°C. |
| Stability: | All frozen tissue sections are stable for 1 year from date of purchase if stored at -80°C without repeated freeze/thaws. |

Product images:

4x Image



20x Image