

Product datasheet for **CS537939**

Frozen Tissue Sections, Ovary: left

Product data:

| | |
|---|---|
| Product Type: | Frozen Sections |
| Disease State: | Other Disease |
| Diagnosis Category: | Borderline Ovarian Tumor |
| Tissue: | Ovary |
| Frozen Sample ID: | FR00036B2C |
| Case ID: | CI0000015213 |
| Tissue of Origin: | Ovary: left |
| Site of Finding: | Ovary: left |
| Appearance: | T |
| Sample Diagnosis (from Pathology Verification): | Tumor of ovary, mucinous, borderline |
| Normal: | 90% |
| Lesional: | 0% |
| Tumor: | 10% |
| Tumor Hypo/Acellular Stroma: | 0% |
| Tumor Hypercellular Stroma: | 0% |
| Necrosis: | 0% |
| Pathology Verification notes from H&E review: | Non Tumor Structures: 100% Ovarian stroma |



[View online »](#)

CASE Diagnosis (from medical center path report): Tumor of ovary, mucinous, borderline

Age: 25

Gender: Female

Race: White or Caucasian

Tumor Grade: AJCC GB: Borderline malignancy

Minimum Stage Grouping: IA

T (Extent of Primary Tumor): T1a

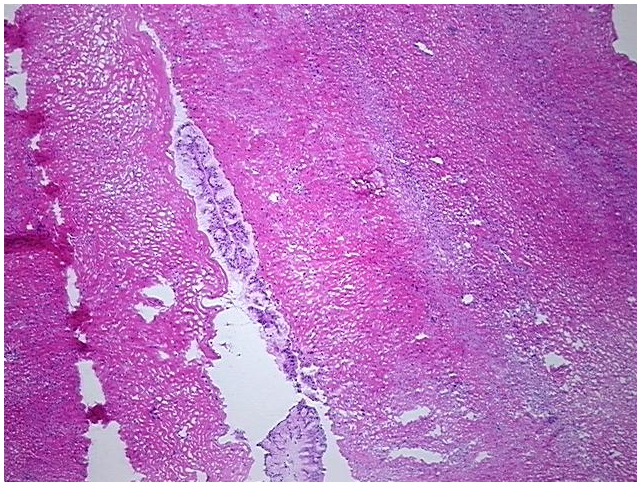
N (Lymph node metastasis): N0

M (Distant metastasis): MX

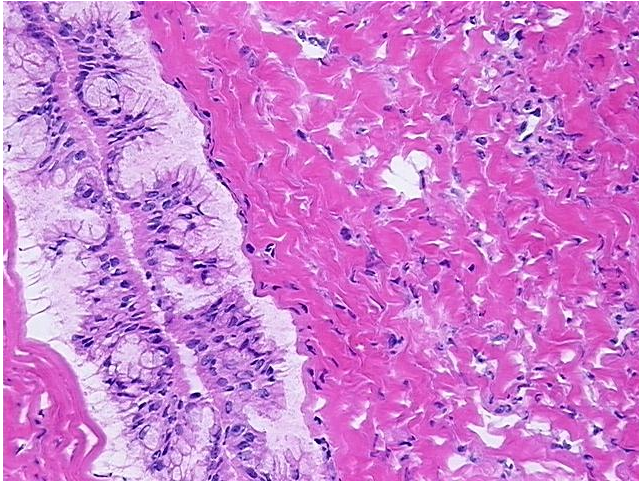
Storage: Store frozen tissue sections at -80°C .

Stability: All frozen tissue sections are stable for 1 year from date of purchase if stored at -80°C without repeated freeze/thaws.

Product images:



4x Image



20x Image