

Product datasheet for **CS537895**

Frozen Tissue Sections, Lung

Product data:

Product Type:	Frozen Sections
Disease State:	Cancer
Diagnosis Category:	Lung Cancer
Tissue:	Lung
Frozen Sample ID:	FR5B341F8B
Case ID:	CI0000015189
Tissue of Origin:	Lung
Site of Finding:	Lung
Appearance:	T
Sample Diagnosis (from Pathology Verification):	Carcinoma of lung, adenosquamous
Normal:	15%
Lesional:	0%
Tumor:	30%
Tumor Hypo/Acellular Stroma:	25%
Tumor Hypercellular Stroma:	25%
Necrosis:	5%
CASE Diagnosis (from medical center path report):	Carcinoma of lung, adenosquamous
Age:	77
Gender:	Female
Race:	Not reported
Tumor Grade:	AJCC G3: Poorly differentiated


[View online »](#)

Minimum Stage Grouping: IIIA

T (Extent of Primary Tumor): T1

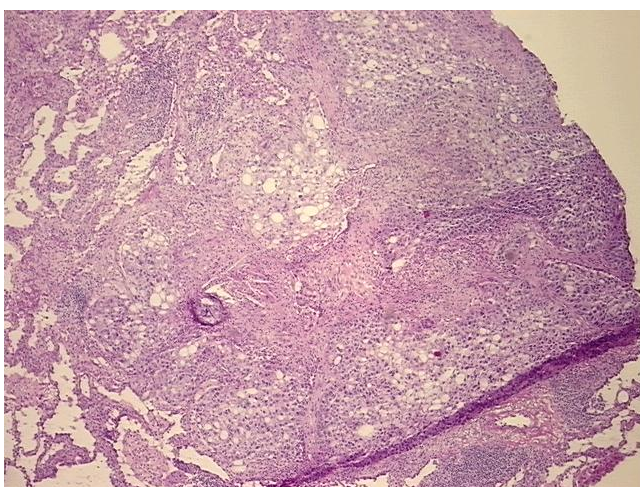
N (Lymph node metastasis): N2

M (Distant metastasis): MX

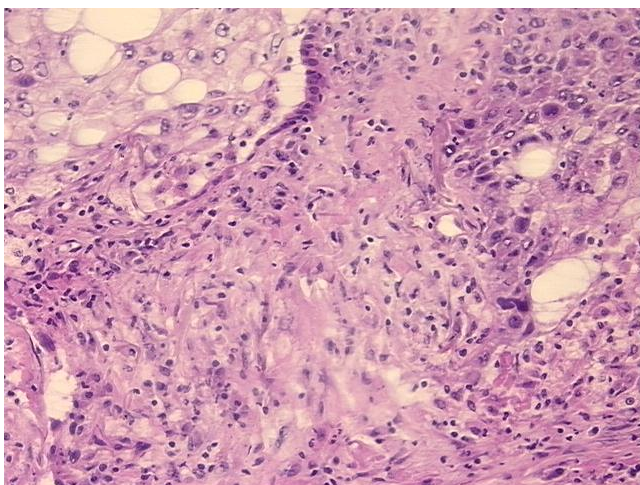
Storage: Store frozen tissue sections at -80°C.

Stability: All frozen tissue sections are stable for 1 year from date of purchase if stored at -80°C without repeated freeze/thaws.

Product images:



4x Image



20x Image