

Product datasheet for **CS537625**

Frozen Tissue Sections, Lung: right lower lobe

Product data:

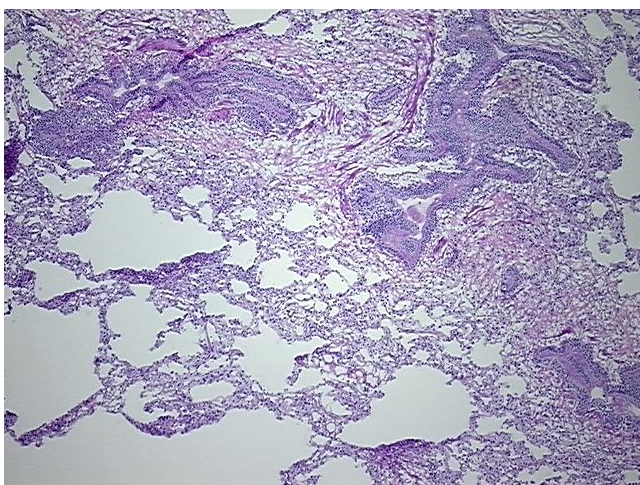
Product Type:	Frozen Sections
Disease State:	Other Disease
Diagnosis Category:	Chronic Obstructive Pulmonary Disease (COPD)
Tissue:	Lung
Frozen Sample ID:	FR00035784
Case ID:	CI0000015144
Tissue of Origin:	Lung: right lower lobe
Site of Finding:	Lung: right lower lobe
Appearance:	L
Sample Diagnosis (from Pathology Verification):	Emphysema, centrilobular
Normal:	80%
Lesional:	20%
Tumor:	0%
Tumor Hypo/Acellular Stroma:	0%
Tumor Hypercellular Stroma:	0%
Necrosis:	0%
Pathology Verification notes from H&E review:	Non Tumor Structures: 80% Alveoli, 10% Bronchioles, 10% Fibrovascular septa
CASE Diagnosis (from medical center path report):	Carcinoma of lung, large cell, neuroendocrine
Age:	73
Gender:	Female
Race:	White or Caucasian



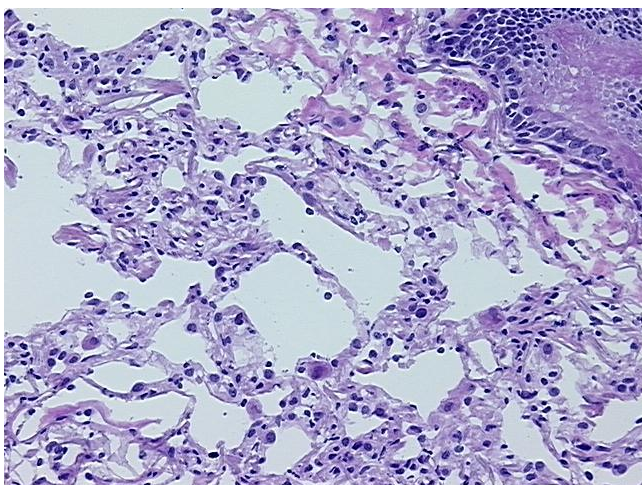
[View online »](#)

Tumor Grade:	Not Reported
Minimum Stage Grouping:	IA
T (Extent of Primary Tumor):	T1
N (Lymph node metastasis):	N0
M (Distant metastasis):	MX
Diagnostic Test Results:	Cytokeratin (Pan) ~ Keratin, Pan ! by IHC,Positive; Cytokeratins (5 and 6) ~ CK5,6 ! by IHC,Negative; Synaptophysin ~ SYN ! by IHC,Positive; Chromogranin A ~ Parathyroid secretory protein 1 ! by IHC,Positive
Storage:	Store frozen tissue sections at -80°C.
Stability:	All frozen tissue sections are stable for 1 year from date of purchase if stored at -80°C without repeated freeze/thaws.

Product images:



4x Image



20x Image