

## Product datasheet for **CS537485**

### Frozen Tissue Sections, Lung: right middle lobe

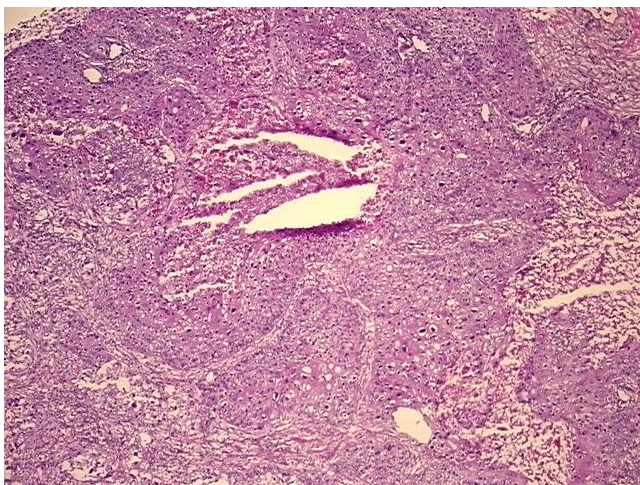
#### Product data:

Product Type:	Frozen Sections
Disease State:	Cancer
Diagnosis Category:	Lung Cancer
Tissue:	Lung
Frozen Sample ID:	FR0003591E
Case ID:	CI0000015101
Tissue of Origin:	Lung: right middle lobe
Site of Finding:	Lung: right middle lobe
Appearance:	T
Sample Diagnosis (from Pathology Verification):	Carcinoma of lung, squamous cell (EGFR+)
Normal:	5%
Lesional:	0%
Tumor:	50%
Tumor Hypo/Acellular Stroma:	10%
Tumor Hypercellular Stroma:	10%
Necrosis:	25%
CASE Diagnosis (from medical center path report):	Carcinoma of lung, squamous cell
Age:	78
Gender:	Male
Race:	White or Caucasian
Tumor Grade:	AJCC G2: Moderately differentiated

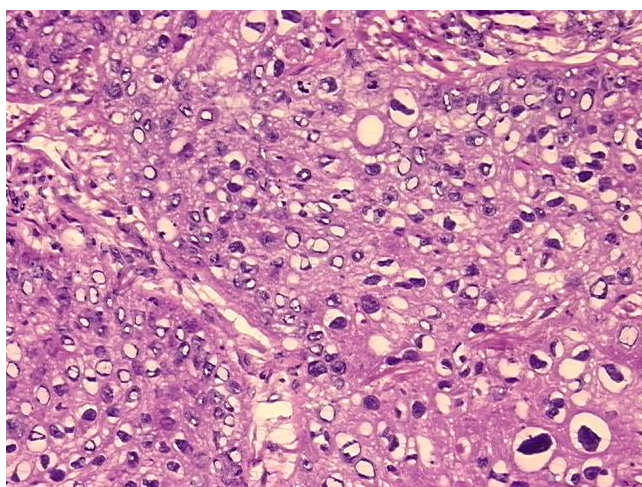


[View online »](#)

Minimum Stage Grouping:	IB
T (Extent of Primary Tumor):	T2
N (Lymph node metastasis):	N0
M (Distant metastasis):	MX
Diagnostic Test Results:	ERBB1 ~ EGFR ~ Epidermal growth factor receptor ! by IHC,Positive, strong; HER2 ~ ERBB2 ~ Neu ! by IHC,Negative
Storage:	Store frozen tissue sections at -80°C.
Stability:	All frozen tissue sections are stable for 1 year from date of purchase if stored at -80°C without repeated freeze/thaws.

**Product images:**

4x Image



20x Image