

Product datasheet for CS537083

Frozen Tissue Sections, Mediastinum

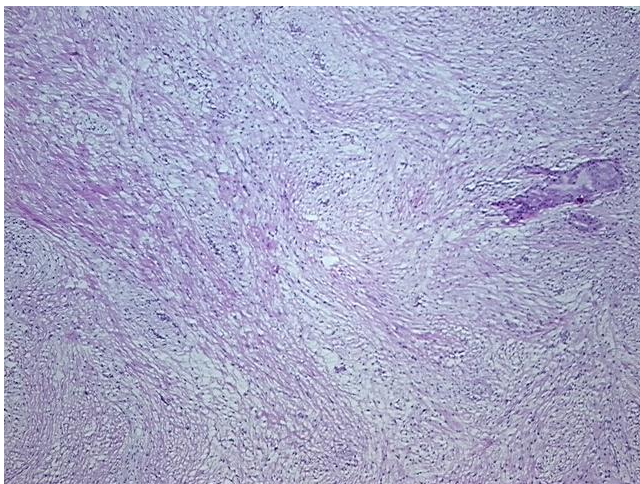
Product data:

Product Type:	Frozen Sections
Disease State:	Other Disease
Diagnosis Category:	Teratoma
Tissue:	Mediastinum
Frozen Sample ID:	FR00035942
Case ID:	CI0000015001
Tissue of Origin:	Mediastinum
Site of Finding:	Mediastinum
Appearance:	T
Sample Diagnosis (from Pathology Verification):	Teratoma of mediastinum, immature
Normal:	0%
Lesional:	0%
Tumor:	90%
Tumor Hypo/Acellular Stroma:	10%
Tumor Hypercellular Stroma:	0%
Necrosis:	0%
Pathology Verification notes from H&E review:	Predominantly mature neuroglial and endodermal glands
CASE Diagnosis (from medical center path report):	Teratoma of mediastinum, immature
Age:	37
Gender:	Male
Race:	White or Caucasian

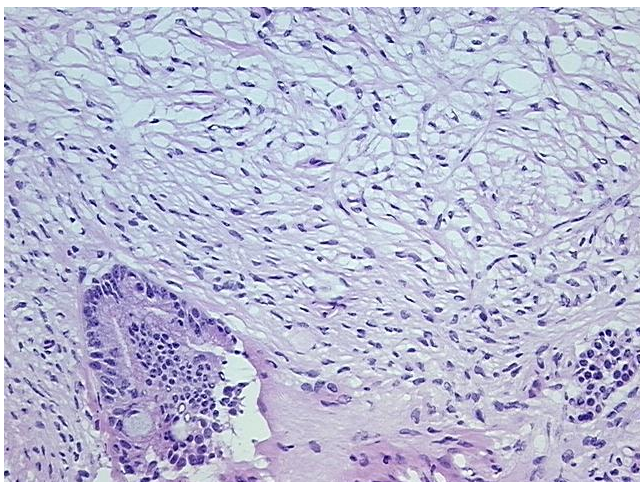


[View online »](#)

Tumor Grade:	Other Histologic Grade
Minimum Stage Grouping:	Not Reported
T (Extent of Primary Tumor):	Not Reported
N (Lymph node metastasis):	Not Reported
M (Distant metastasis):	Not Reported
Storage:	Store frozen tissue sections at -80°C.
Stability:	All frozen tissue sections are stable for 1 year from date of purchase if stored at -80°C without repeated freeze/thaws.

Product images:

4x Image



20x Image