

Product datasheet for **CS536981**

Frozen Tissue Sections, Cervix

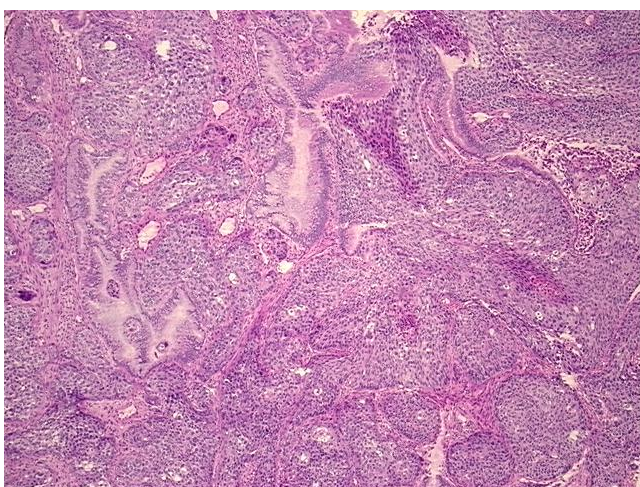
Product data:

| | |
|---|------------------------------------|
| Product Type: | Frozen Sections |
| Disease State: | Cancer |
| Diagnosis Category: | Cervical Cancer |
| Tissue: | Cervix |
| Frozen Sample ID: | FR00035655 |
| Case ID: | CI0000014978 |
| Tissue of Origin: | Cervix |
| Site of Finding: | Cervix |
| Appearance: | T |
| Sample Diagnosis (from Pathology Verification): | Carcinoma of cervix, squamous cell |
| Normal: | 0% |
| Lesional: | 0% |
| Tumor: | 90% |
| Tumor Hypo/Acellular Stroma: | 5% |
| Tumor Hypercellular Stroma: | 5% |
| Necrosis: | 0% |
| CASE Diagnosis (from medical center path report): | Carcinoma of cervix, squamous cell |
| Age: | 45 |
| Gender: | Female |
| Race: | White or Caucasian |
| Tumor Grade: | FIGO G2: Moderately differentiated |

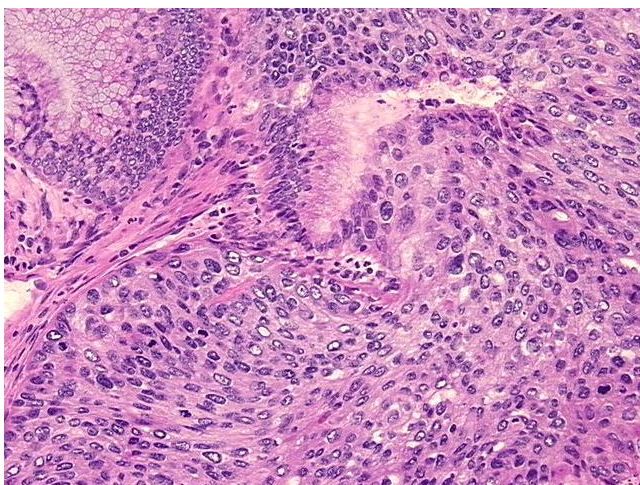


[View online »](#)

| | |
|------------------------------|--|
| Minimum Stage Grouping: | IIIB |
| T (Extent of Primary Tumor): | T1b2 |
| N (Lymph node metastasis): | N1 |
| M (Distant metastasis): | MX |
| Storage: | Store frozen tissue sections at -80°C. |
| Stability: | All frozen tissue sections are stable for 1 year from date of purchase if stored at -80°C without repeated freeze/thaws. |

Product images:

4x Image



20x Image