

## Product datasheet for **CS536964**

### Frozen Tissue Sections, Colon

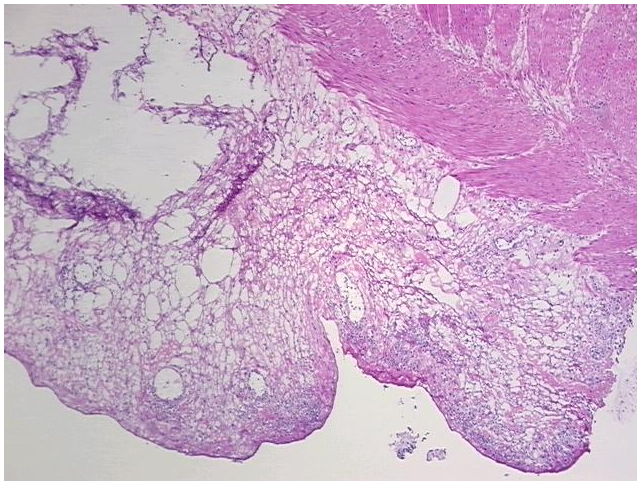
#### Product data:

Product Type:	Frozen Sections
Disease State:	Other Disease
Diagnosis Category:	Serositis
Tissue:	Colon
Frozen Sample ID:	FR65EE2438
Case ID:	CI0000014975
Tissue of Origin:	Colon
Site of Finding:	Colon
Appearance:	L
Sample Diagnosis (from Pathology Verification):	Serositis of stomach
Normal:	0%
Lesional:	100%
Tumor:	0%
Tumor Hypo/Acellular Stroma:	0%
Tumor Hypercellular Stroma:	0%
Necrosis:	0%
Pathology Verification notes from H&E review:	Inflammation: Mild Mixed inflammatory infiltrate; Non Tumor Structures: 20% Mucosa, 25% Submucosa, 30% Muscle, 25% serosa
CASE Diagnosis (from medical center path report):	Gastrointestinal stromal tumor of stomach
Age:	71
Gender:	Male
Race:	White or Caucasian

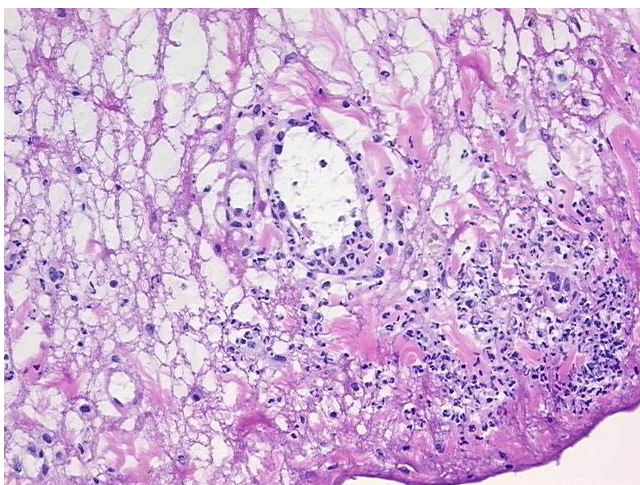


[View online »](#)

<b>Tumor Grade:</b>	Not Reported
<b>Minimum Stage Grouping:</b>	Not Reported
<b>T (Extent of Primary Tumor):</b>	Not Reported
<b>N (Lymph node metastasis):</b>	Not Reported
<b>M (Distant metastasis):</b>	Not Reported
<b>Diagnostic Test Results:</b>	Desmin ! by IHC,Negative; CD34 ~ HPCA ! by IHC,Positive; MSA ~ Muscle Specific Actin,Negative; CD117 ~ C-kit ~ SCFR ! by IHC,Positive
<b>Storage:</b>	Store frozen tissue sections at -80°C.
<b>Stability:</b>	All frozen tissue sections are stable for 1 year from date of purchase if stored at -80°C without repeated freeze/thaws.

**Product images:**

4x Image



20x Image