

Product datasheet for **CS536849**

Frozen Tissue Sections, Lung

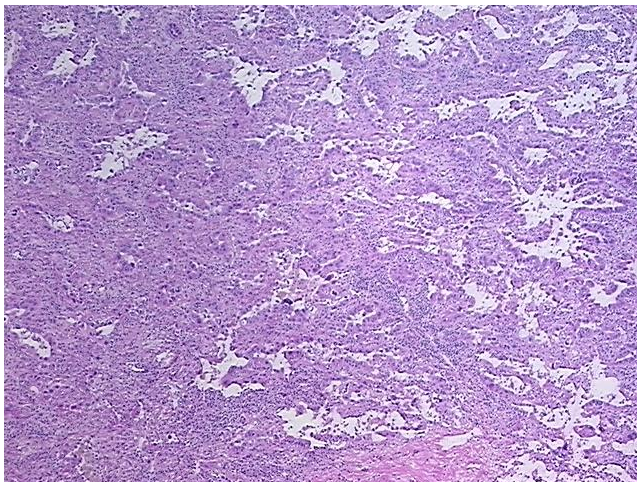
Product data:

Product Type:	Frozen Sections
Disease State:	Cancer
Diagnosis Category:	Lung Cancer
Tissue:	Lung
Frozen Sample ID:	FR000354CF
Case ID:	CI0000014946
Tissue of Origin:	Lung
Site of Finding:	Lung
Appearance:	T
Sample Diagnosis (from Pathology Verification):	Adenocarcinoma of lung
Normal:	10%
Lesional:	55%
Tumor:	25%
Tumor Hypo/Acellular Stroma:	0%
Tumor Hypercellular Stroma:	10%
Necrosis:	0%
Pathology Verification notes from H&E review:	Tumor Stroma (Cellular): Desmoplastic reaction; Lesion (55%): Fibrosis 100%; Inflammation: Moderate Lymphoplasmacytic infiltrate; Non Tumor Structures: 10% Alveoli, 30% Fibrovascular septa, 60% Fibroelastosis
CASE Diagnosis (from medical center path report):	Adenocarcinoma of lung
Age:	76
Gender:	Male

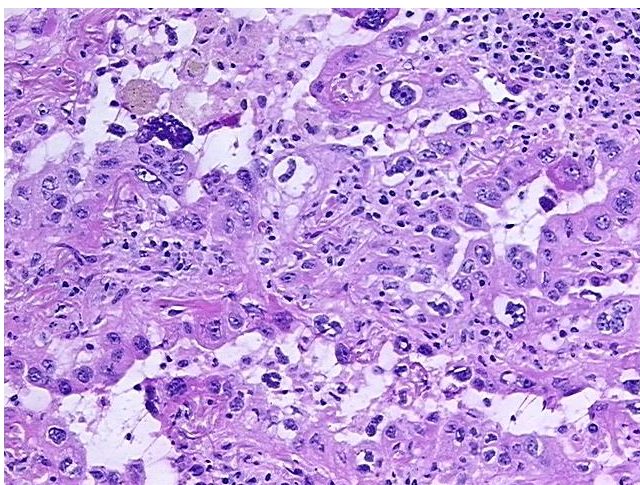

[View online »](#)

Race:	White or Caucasian
Tumor Grade:	AJCC G2: Moderately differentiated
Minimum Stage Grouping:	IA
T (Extent of Primary Tumor):	T1
N (Lymph node metastasis):	N0
M (Distant metastasis):	MX
Diagnostic Test Results:	ERBB1 ~ EGFR ~ Epidermal growth factor receptor ! by IHC,Positive, moderate; HER2 ~ ERBB2 ~ Neu ! by IHC,Positive, weak
Storage:	Store frozen tissue sections at -80°C.
Stability:	All frozen tissue sections are stable for 1 year from date of purchase if stored at -80°C without repeated freeze/thaws.

Product images:



4x Image



20x Image