

Product datasheet for **CS536456**

Frozen Tissue Sections, Breast

Product data:

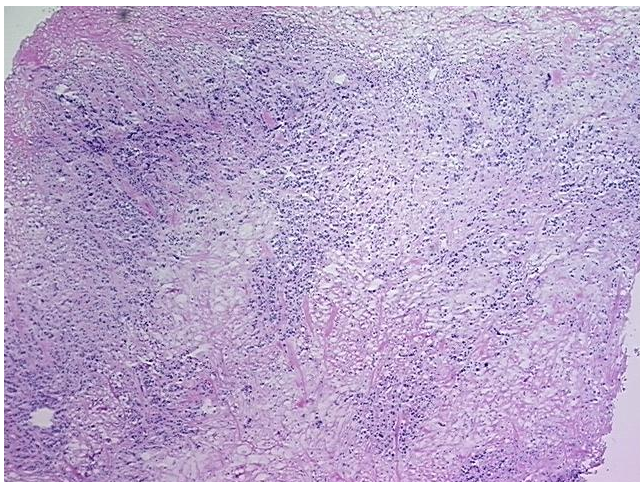
Product Type:	Frozen Sections
Disease State:	Cancer
Diagnosis Category:	Breast Cancer
Tissue:	Breast
Frozen Sample ID:	FR0003B995
Case ID:	CI0000014321
Tissue of Origin:	Breast
Site of Finding:	Breast
Appearance:	T
Sample Diagnosis (from Pathology Verification):	Adenocarcinoma of breast, ductal
Normal:	0%
Lesional:	0%
Tumor:	25%
Tumor Hypo/Acellular Stroma:	0%
Tumor Hypercellular Stroma:	45%
Necrosis:	30%
Pathology Verification notes from H&E review:	Tumor Stroma (Cellular): Fibroblastic cells
CASE Diagnosis (from medical center path report):	Adenocarcinoma of breast, ductal
Age:	62
Gender:	Female
Race:	White or Caucasian



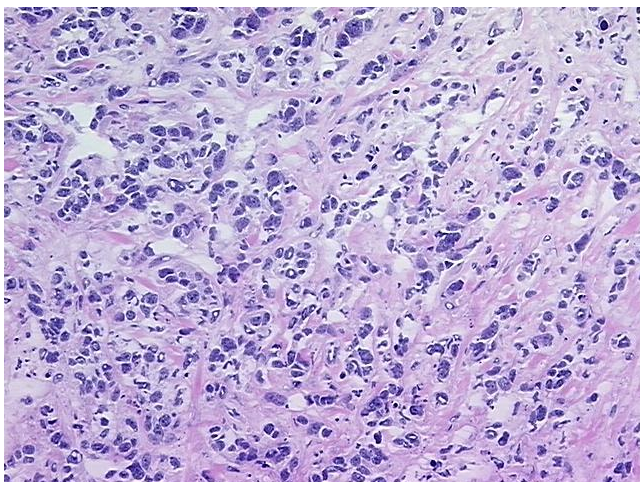
[View online »](#)

Tumor Grade:	Nottingham G3: 8-9 points High combined grade (unfavorable)
Minimum Stage Grouping:	IIA
T (Extent of Primary Tumor):	T2
N (Lymph node metastasis):	N0
M (Distant metastasis):	MX
Storage:	Store frozen tissue sections at -80°C.
Stability:	All frozen tissue sections are stable for 1 year from date of purchase if stored at -80°C without repeated freeze/thaws.

Product images:



4x Image



20x Image