

Product datasheet for CS536389

Frozen Tissue Sections, Esophagus

Product data:

| | |
|---|---|
| Product Type: | Frozen Sections |
| Disease State: | Other Disease |
| Diagnosis Category: | Esophagitis |
| Tissue: | Esophagus |
| Frozen Sample ID: | FR0003B9E3 |
| Case ID: | CI0000014306 |
| Tissue of Origin: | Esophagus |
| Site of Finding: | Esophagus |
| Appearance: | L |
| Sample Diagnosis (from Pathology Verification): | Esophagitis, erosive |
| Normal: | 0% |
| Lesional: | 100% |
| Tumor: | 0% |
| Tumor Hypo/Acellular Stroma: | 0% |
| Tumor Hypercellular Stroma: | 0% |
| Necrosis: | 0% |
| Pathology Verification notes from H&E review: | Inflammation: Moderate Mixed inflammatory infiltrate; Non Tumor Structures: 10% Mucosa, 20% Submucosa, 70% Muscle |
| CASE Diagnosis (from medical center path report): | Ulcer of gastroesophageal junction |
| Age: | 69 |
| Gender: | Male |
| Race: | White or Caucasian |

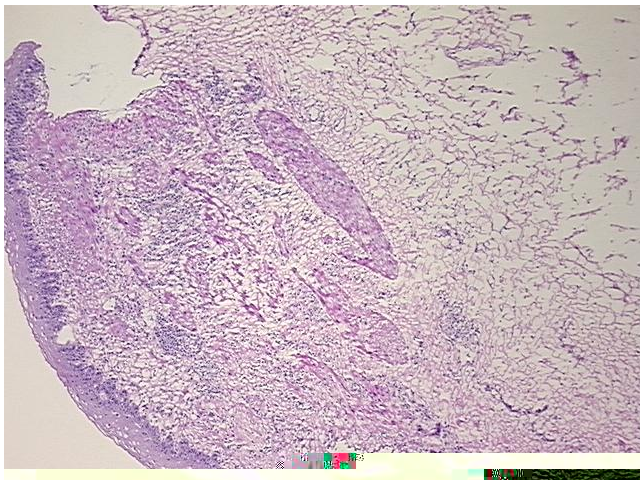


[View online »](#)

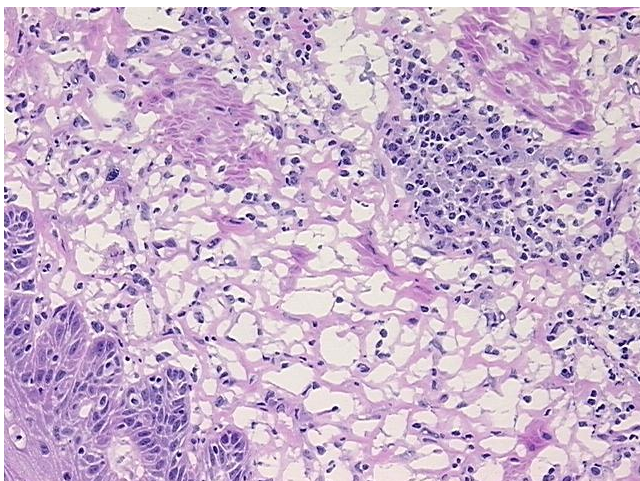
Storage: Store frozen tissue sections at -80°C.

Stability: All frozen tissue sections are stable for 1 year from date of purchase if stored at -80°C without repeated freeze/thaws.

Product images:



4x Image



20x Image