

Product datasheet for **CS536298**

Frozen Tissue Sections, Ovary: bilateral

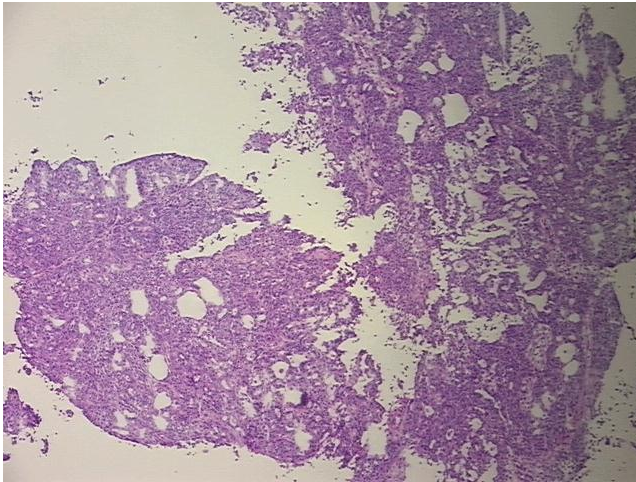
Product data:

Product Type:	Frozen Sections
Disease State:	Cancer
Diagnosis Category:	Ovarian Cancer
Tissue:	Ovary
Frozen Sample ID:	FR5B344485
Case ID:	CI0000014295
Tissue of Origin:	Ovary: bilateral
Site of Finding:	Omentum
Appearance:	T
Sample Diagnosis (from Pathology Verification):	Carcinoma of the ovary, mixed endometrioid and serous, metastatic
Normal:	0%
Lesional:	0%
Tumor:	70%
Tumor Hypo/Acellular Stroma:	0%
Tumor Hypercellular Stroma:	30%
Necrosis:	0%
Pathology Verification notes from H&E review:	Tumor Stroma (Cellular): Desmoplastic reaction; Other Features/Comments: Metastatic epithelial carcinoma of ovary, mixed endometrioid and serous types.
CASE Diagnosis (from medical center path report):	Carcinoma of ovary, endometrioid, serous
Age:	44
Gender:	Female
Race:	White or Caucasian

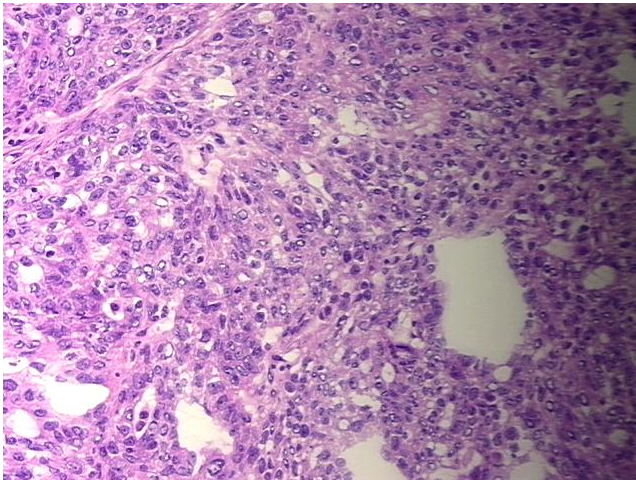


[View online »](#)

Tumor Grade:	FIGO G3: Poorly differentiated
Minimum Stage Grouping:	IIIC
T (Extent of Primary Tumor):	T3c
N (Lymph node metastasis):	NX
M (Distant metastasis):	MX
Storage:	Store frozen tissue sections at -80°C.
Stability:	All frozen tissue sections are stable for 1 year from date of purchase if stored at -80°C without repeated freeze/thaws.

Product images:

4x Image



20x Image