

Product datasheet for CS536210

Frozen Tissue Sections, Stomach

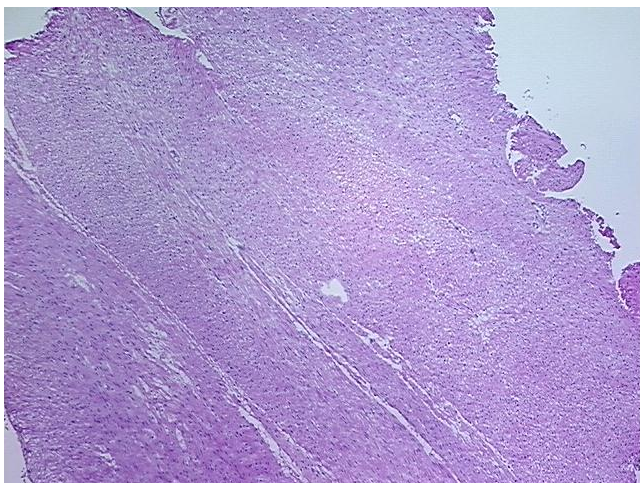
Product data:

| | |
|---|---|
| Product Type: | Frozen Sections |
| Disease State: | Other Disease |
| Diagnosis Category: | Gastrointestinal Stromal Tumor (GIST) |
| Tissue: | Stomach |
| Frozen Sample ID: | FR0003B6D9 |
| Case ID: | CI0000014279 |
| Tissue of Origin: | Stomach |
| Site of Finding: | Stomach |
| Appearance: | T |
| Sample Diagnosis (from Pathology Verification): | Gastrointestinal stromal tumor of stomach |
| Normal: | 0% |
| Lesional: | 0% |
| Tumor: | 50% |
| Tumor Hypo/Acellular Stroma: | 50% |
| Tumor Hypercellular Stroma: | 0% |
| Necrosis: | 0% |
| CASE Diagnosis (from medical center path report): | Gastrointestinal stromal tumor of stomach |
| Age: | 46 |
| Gender: | Male |
| Race: | Black or African American |
| Tumor Grade: | Not Reported |

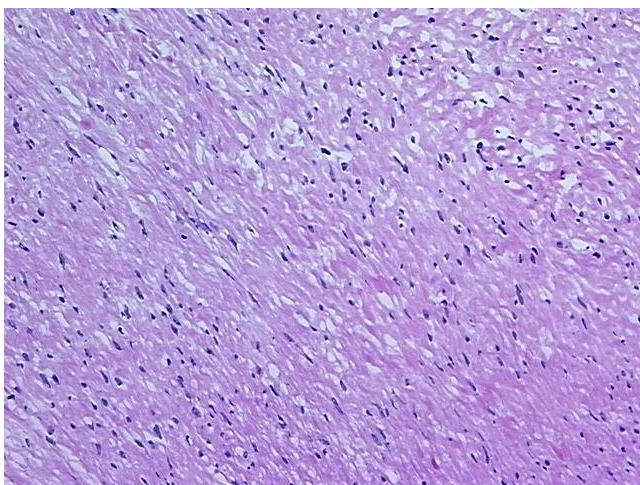


[View online »](#)

| | |
|------------------------------|---|
| Minimum Stage Grouping: | Not Reported |
| T (Extent of Primary Tumor): | Not Reported |
| N (Lymph node metastasis): | Not Reported |
| M (Distant metastasis): | Not Reported |
| Diagnostic Test Results: | S100 protein,Reported as Performed or Reviewed; CD34 ~ HPCA ! by IHC,Positive; MSA ~ Muscle Specific Actin,Negative; CD117 ~ C-kit ~ SCFR ! by IHC,Positive |
| Storage: | Store frozen tissue sections at -80°C. |
| Stability: | All frozen tissue sections are stable for 1 year from date of purchase if stored at -80°C without repeated freeze/thaws. |

Product images:

4x Image



20x Image