

## Product datasheet for **CS536102**

### Frozen Tissue Sections, Kidney

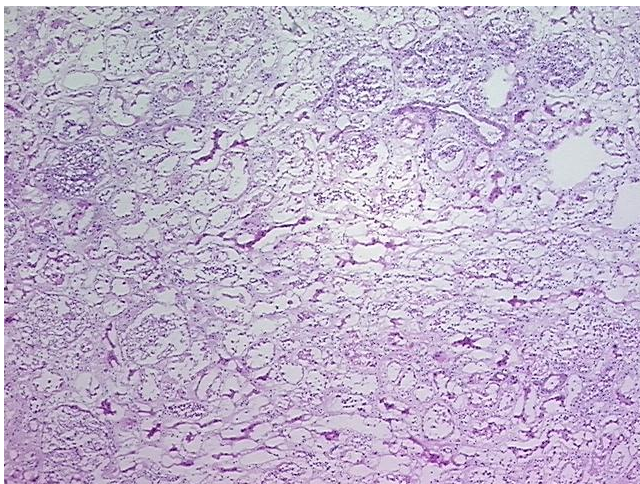
#### Product data:

Product Type:	Frozen Sections
Disease State:	Other Disease
Diagnosis Category:	Infarction
Tissue:	Kidney
Frozen Sample ID:	FR0003B5D7
Case ID:	CI0000014241
Tissue of Origin:	Kidney
Site of Finding:	Kidney
Appearance:	L
Sample Diagnosis (from Pathology Verification):	Infarction of kidney
Normal:	25%
Lesional:	75%
Tumor:	0%
Tumor Hypo/Acellular Stroma:	0%
Tumor Hypercellular Stroma:	0%
Necrosis:	0%
Pathology Verification notes from H&E review:	Non Tumor Structures: 100% Cortex; Other Features/Comments: infarction consistent with prior embolic event
CASE Diagnosis (from medical center path report):	Carcinoma of kidney, renal cell, clear cell
Age:	45
Gender:	Female
Race:	White or Caucasian

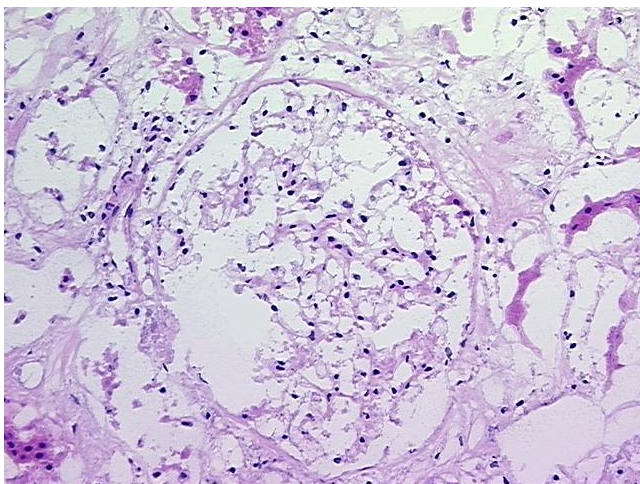


[View online »](#)

Tumor Grade:	Fuhrman G3: Nuclei very irregular
Minimum Stage Grouping:	IV
T (Extent of Primary Tumor):	T2
N (Lymph node metastasis):	N0
M (Distant metastasis):	M1
Storage:	Store frozen tissue sections at -80°C.
Stability:	All frozen tissue sections are stable for 1 year from date of purchase if stored at -80°C without repeated freeze/thaws.

**Product images:**

4x Image



20x Image