

## Product datasheet for CS535098

### Frozen Tissue Sections, Lymph node

#### Product data:

Product Type:	Frozen Sections
Disease State:	Other Disease
Diagnosis Category:	Lymphadenopathy
Tissue:	Lymph node
Frozen Sample ID:	FR00038545
Case ID:	CI0000013764
Tissue of Origin:	Lymph node
Site of Finding:	Lymph node
Appearance:	L
Sample Diagnosis (from Pathology Verification):	Dermatopathic lymphadenopathy
Normal:	0%
Lesional:	100%
Tumor:	0%
Tumor Hypo/Acellular Stroma:	0%
Tumor Hypercellular Stroma:	0%
Necrosis:	0%
Pathology Verification notes from H&E review:	Non Tumor Structures: 70% Follicles, 30% Inter-follicular zone
CASE Diagnosis (from medical center path report):	Dermatopathic lymphadenopathy
Age:	38
Gender:	Male
Race:	Black or African American



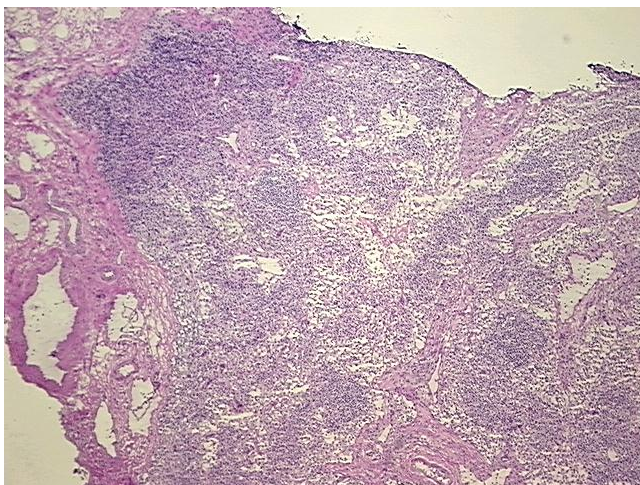
[View online »](#)

**Diagnostic Test Results:** CD3 ~ Leu4 ~ UCHT1 ! by IHC,Positive; Kappa light chain ! by FC,Positive, polyclonal; Lambda light chain ! by FC,Positive, polyclonal; CD8 ~ Leu2a ~ T8 ! by IHC,Positive; CD5 ~ Leu1 ! by IHC,Positive, focal; CD4 ~ Leu3a ! by IHC,Positive; CD10

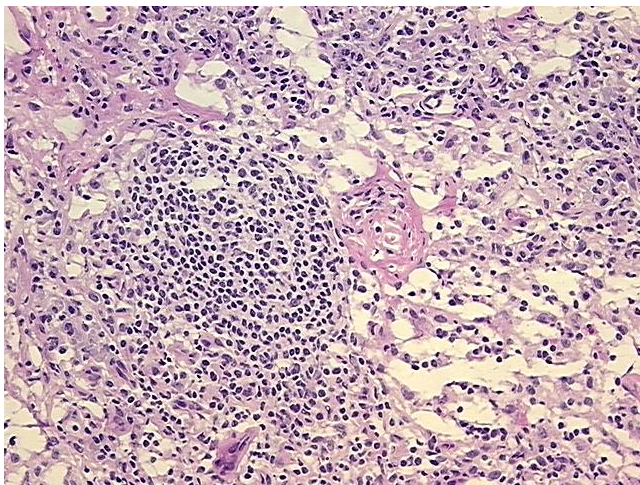
**Storage:** Store frozen tissue sections at -80°C.

**Stability:** All frozen tissue sections are stable for 1 year from date of purchase if stored at -80°C without repeated freeze/thaws.

**Product images:**



4x Image



20x Image