

## Product datasheet for **CS535024**

### Frozen Tissue Sections, Pancreas

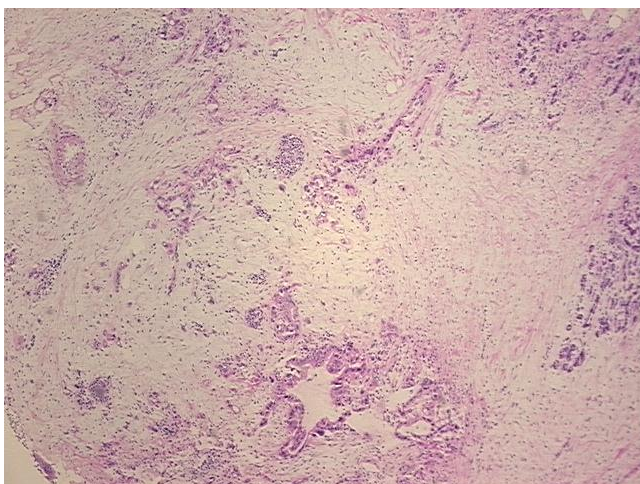
#### Product data:

|   |  |
|---|--|
| Product Type:                                     | Frozen Sections  |
| Disease State:                                    | Cancer   |
| Diagnosis Category:                               | Pancreatic Cancer  |
| Tissue:   | Pancreas   |
| Frozen Sample ID:                                 | FR00037E13   |
| Case ID:  | CI0000013696   |
| Tissue of Origin:                                 | Pancreas   |
| Site of Finding:                                  | Pancreas   |
| Appearance:                                       | T  |
| Sample Diagnosis (from Pathology Verification):   | Adenocarcinoma of pancreas, mucinous   |
| Normal:   | 55%  |
| Lesional:   | 0%   |
| Tumor:  | 10%  |
| Tumor Hypo/Acellular Stroma:                      | 0%   |
| Tumor Hypercellular Stroma:                       | 35%  |
| Necrosis:   | 0%   |
| Pathology Verification notes from H&E review:     | Non Tumor Structures: 40% Exocrine epithelium, 15% Endocrine epithelium, 10% Ducts, 35% interstitial connective tissue |
| CASE Diagnosis (from medical center path report): | Adenocarcinoma of pancreas, mucinous   |
| Age:  | 75   |
| Gender:   | Female   |
| Race:   | White or Caucasian   |

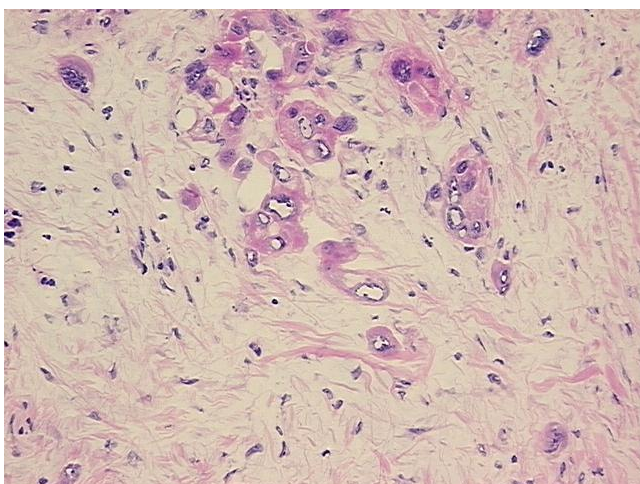


[View online »](#)

|                              |  |
|------------------------------|--|
| Tumor Grade:                 | AJCC G3: Poorly differentiated   |
| Minimum Stage Grouping:      | IIB  |
| T (Extent of Primary Tumor): | T3   |
| N (Lymph node metastasis):   | N1   |
| M (Distant metastasis):      | MX   |
| Storage:                     | Store frozen tissue sections at -80°C.   |
| Stability:                   | All frozen tissue sections are stable for 1 year from date of purchase if stored at -80°C without repeated freeze/thaws. |

**Product images:**

4x Image



20x Image