

Product datasheet for **CS534967**

Frozen Tissue Sections, Colon: right

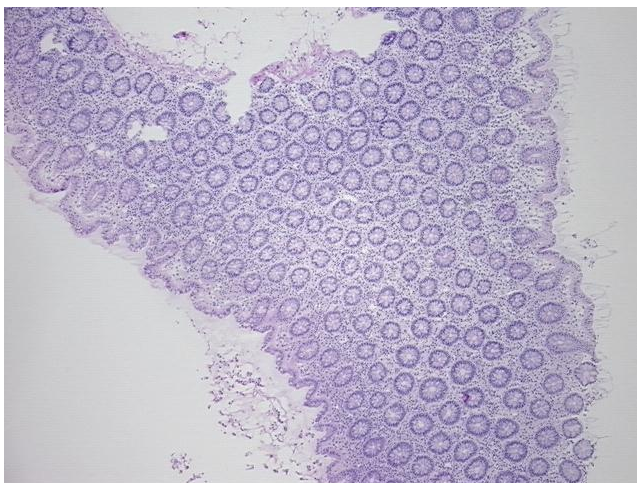
Product data:

Product Type:	Frozen Sections
Disease State:	Normal
Diagnosis Category:	Normal
Tissue:	Colon
Frozen Sample ID:	FR00038851
Case ID:	CI0000013662
Tissue of Origin:	Colon: right
Site of Finding:	Colon: right
Appearance:	R
Sample Diagnosis (from Pathology Verification):	Within normal limits
Normal:	100%
Lesional:	0%
Tumor:	0%
Tumor Hypo/Acellular Stroma:	0%
Tumor Hypercellular Stroma:	0%
Necrosis:	0%
Pathology Verification notes from H&E review:	Non Tumor Structures: 45% Mucosa, 55% Submucosa
CASE Diagnosis (from medical center path report):	Adenocarcinoma of colon
Age:	72
Gender:	Male
Race:	Black or African American

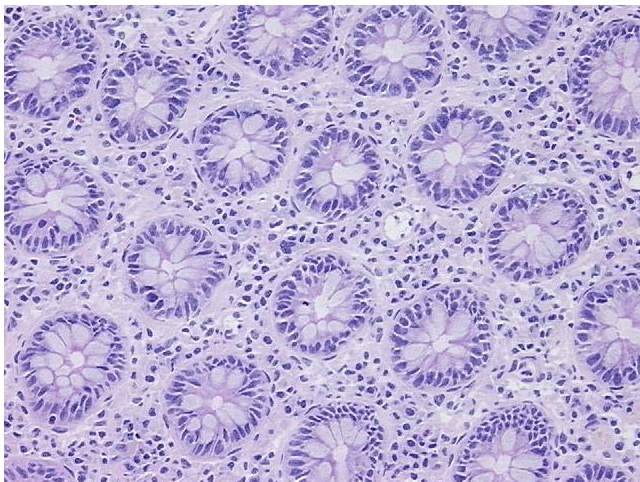


[View online »](#)

Tumor Grade:	AJCC G2: Moderately differentiated
Minimum Stage Grouping:	IIIB
T (Extent of Primary Tumor):	T3
N (Lymph node metastasis):	N1
M (Distant metastasis):	MX
Diagnostic Test Results:	ALK1 ~ NPM-ALK fusion ~ p80 ! by IHC,Negative; CD3 ~ Leu4 ~ UCHT1 ! by IHC,Positive; T-cell-restricted intracellular antigen ~ TIA1 ! by IHC,Negative; Other immunohistochemistry,Positive, strong; EBV-mRNA ~ EBER2,Positive; CD56 ~ NCAM ~ NK
Storage:	Store frozen tissue sections at -80°C.
Stability:	All frozen tissue sections are stable for 1 year from date of purchase if stored at -80°C without repeated freeze/thaws.

Product images:

4x Image



20x Image