

Product datasheet for **CS534966**

Frozen Tissue Sections, Colon: right

Product data:

Product Type:	Frozen Sections
Disease State:	Normal
Diagnosis Category:	Normal
Tissue:	Colon
Frozen Sample ID:	FR0003884F
Case ID:	CI0000013662
Tissue of Origin:	Colon: right
Site of Finding:	Colon: right
Appearance:	R
Sample Diagnosis (from Pathology Verification):	Within normal limits
Normal:	100%
Lesional:	0%
Tumor:	0%
Tumor Hypo/Acellular Stroma:	0%
Tumor Hypercellular Stroma:	0%
Necrosis:	0%
Pathology Verification notes from H&E review:	Non Tumor Structures: 5% Mucosa, 55% Submucosa, 40% Muscle



[View online »](#)

CASE Diagnosis (from medical center path report): Adenocarcinoma of colon

Age: 72

Gender: Male

Race: Black or African American

Tumor Grade: AJCC G2: Moderately differentiated

Minimum Stage Grouping: IIIB

T (Extent of Primary Tumor): T3

N (Lymph node metastasis): N1

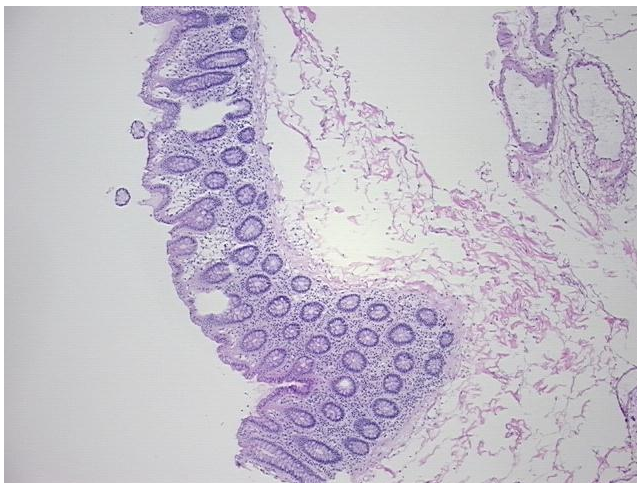
M (Distant metastasis): MX

Diagnostic Test Results: ALK1 ~ NPM-ALK fusion ~ p80 ! by IHC,Negative; CD3 ~ Leu4 ~ UCHL1 ! by IHC,Positive; T-cell-restricted intracellular antigen ~ TIA1 ! by IHC,Negative; Other immunohistochemistry,Positive, strong; EBV-mRNA ~ EBER2,Positive; CD56 ~ NCAM ~ NK

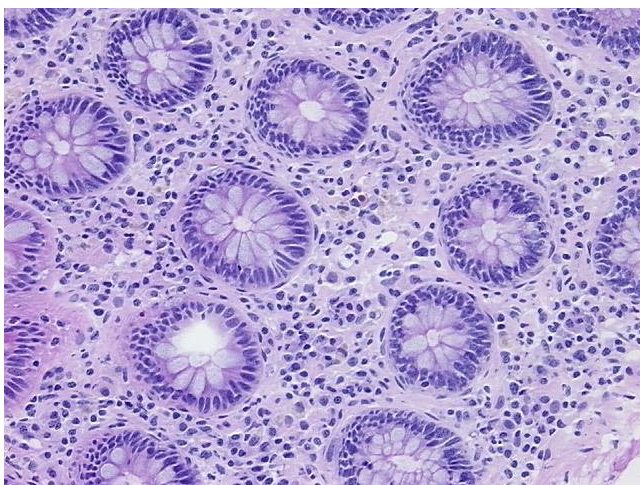
Storage: Store frozen tissue sections at -80°C.

Stability: All frozen tissue sections are stable for 1 year from date of purchase if stored at -80°C without repeated freeze/thaws.

Product images:



4x Image



20x Image