

Product datasheet for **CS534919**

Frozen Tissue Sections, Cecum

Product data:

| | |
|---|---|
| Product Type: | Frozen Sections |
| Disease State: | Normal |
| Diagnosis Category: | Normal |
| Tissue: | Colon |
| Frozen Sample ID: | FR00037C94 |
| Case ID: | CI0000013644 |
| Tissue of Origin: | Cecum |
| Site of Finding: | Cecum |
| Appearance: | R |
| Sample Diagnosis (from Pathology Verification): | Within normal limits |
| Normal: | 100% |
| Lesional: | 0% |
| Tumor: | 0% |
| Tumor Hypo/Acellular Stroma: | 0% |
| Tumor Hypercellular Stroma: | 0% |
| Necrosis: | 0% |
| Pathology Verification notes from H&E review: | Non Tumor Structures: 65% Mucosa, 10% Submucosa, 25% Muscle |



CASE Diagnosis (from medical center path report): Crohns disease

Age: 45

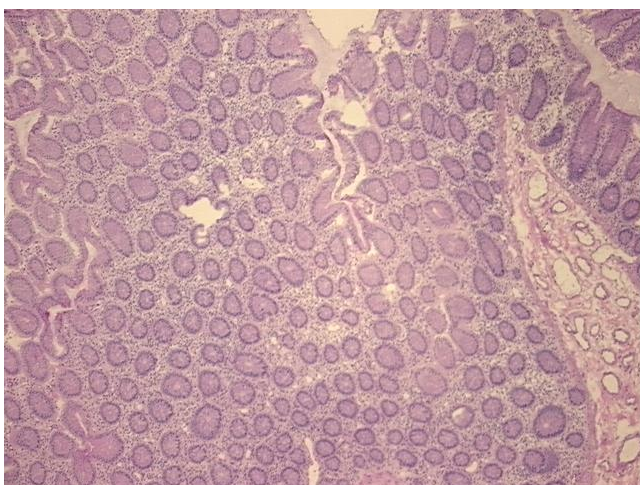
Gender: Female

Race: White or Caucasian

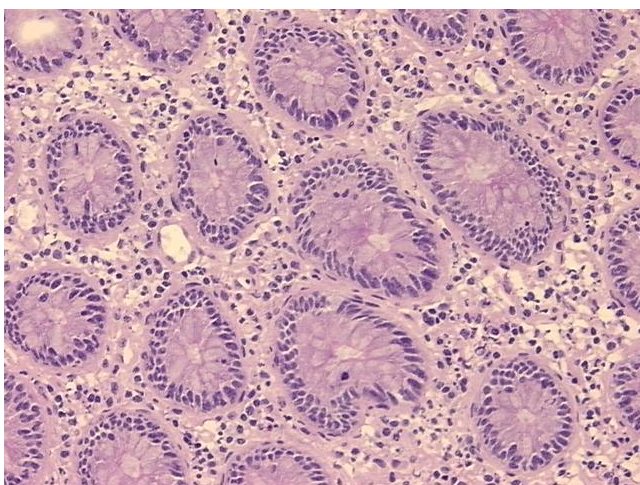
Storage: Store frozen tissue sections at -80°C .

Stability: All frozen tissue sections are stable for 1 year from date of purchase if stored at -80°C without repeated freeze/thaws.

Product images:



4x Image



20x Image