

## Product datasheet for **CS534784**

### Frozen Tissue Sections, Lung

#### Product data:

|   |  |
|---|--|
| Product Type:                                   | Frozen Sections  |
| Disease State:                                  | Other Disease  |
| Diagnosis Category:                             | Pneumonia  |
| Tissue:   | Lung   |
| Frozen Sample ID:                               | FR00034A94   |
| Case ID:  | CI0000013587   |
| Tissue of Origin:                               | Lung   |
| Site of Finding:                                | Lung   |
| Appearance:                                     | L  |
| Sample Diagnosis (from Pathology Verification): | Pneumonia, post-obstructive                                |
| Normal:   | 0%   |
| Lesional:                                       | 100%   |
| Tumor:  | 0%   |
| Tumor Hypo/Acellular Stroma:                    | 0%   |
| Tumor Hypercellular Stroma:                     | 0%   |
| Necrosis:                                       | 0%   |
| Pathology Verification notes from H&E review:   | Non Tumor Structures: 40% Alveoli, 60% Fibrovascular septa |



[View online »](#)

**CASE Diagnosis (from medical center path report):** Tumor of bone, giant cell, metastatic

**Age:** 28

**Gender:** Female

**Race:** White or Caucasian

**Tumor Grade:** Not Reported

**Minimum Stage Grouping:** IVA

**T (Extent of Primary Tumor):** TX

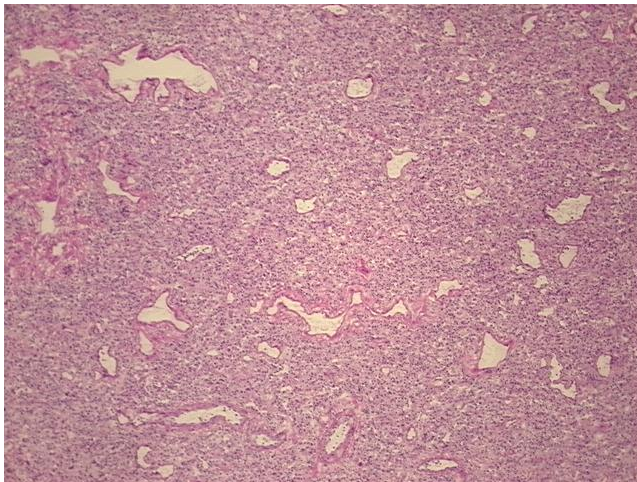
**N (Lymph node metastasis):** NX

**M (Distant metastasis):** M1a

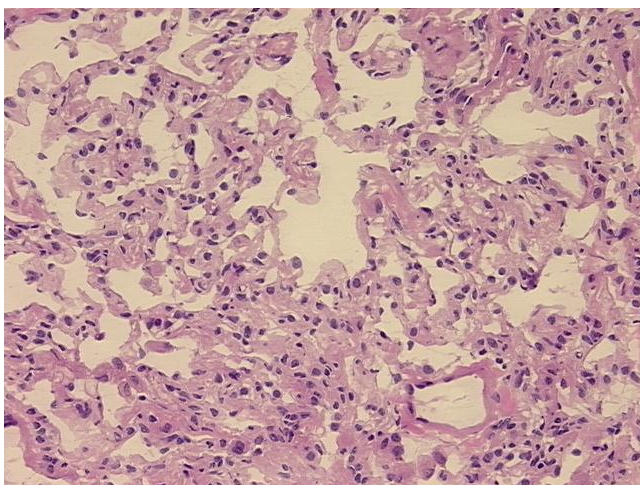
**Storage:** Store frozen tissue sections at -80°C.

**Stability:** All frozen tissue sections are stable for 1 year from date of purchase if stored at -80°C without repeated freeze/thaws.

**Product images:**



4x Image



20x Image