

Product datasheet for **CS534141**

Frozen Tissue Sections, Lung

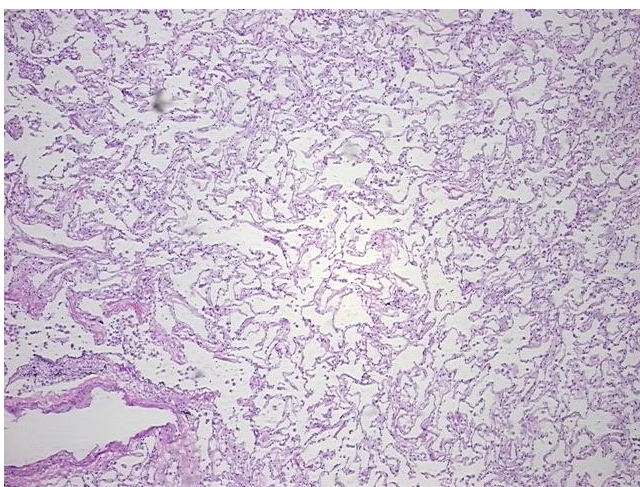
Product data:

Product Type:	Frozen Sections
Disease State:	Normal
Diagnosis Category:	Normal
Tissue:	Lung
Frozen Sample ID:	FR00036517
Case ID:	CI0000013474
Tissue of Origin:	Lung
Site of Finding:	Lung
Appearance:	R
Sample Diagnosis (from Pathology Verification):	Within normal limits
Normal:	100%
Lesional:	0%
Tumor:	0%
Tumor Hypo/Acellular Stroma:	0%
Tumor Hypercellular Stroma:	0%
Necrosis:	0%
Pathology Verification notes from H&E review:	Inflammation: Mild Macrophages; Non Tumor Structures: 88% Alveoli, 2% Bronchioles, 10% Fibrovascular septa

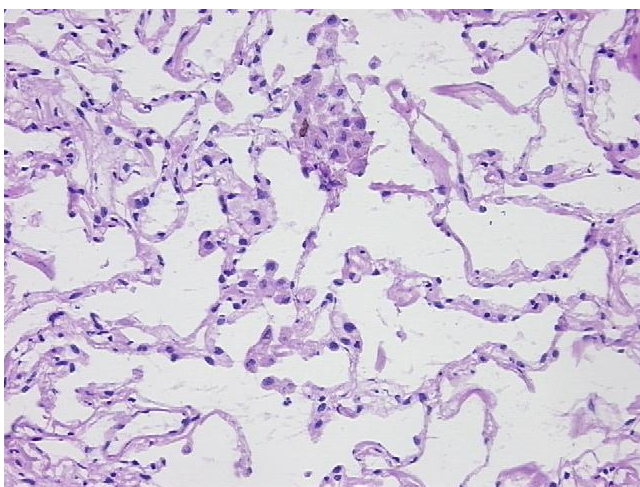


CASE Diagnosis (from medical center path report):

Hamartoma of lung

Age: 53**Gender:** Male**Race:** White or Caucasian**Storage:** Store frozen tissue sections at -80°C.**Stability:** All frozen tissue sections are stable for 1 year from date of purchase if stored at -80°C without repeated freeze/thaws.**Product images:**

4x Image



20x Image