

## Product datasheet for **CS534117**

### Frozen Tissue Sections, Colon: left

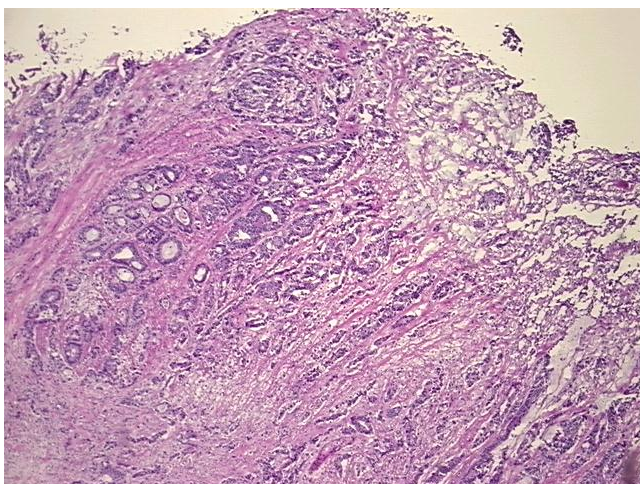
#### Product data:

|   |                                       |
|---|---------------------------------------|
| Product Type:                                     | Frozen Sections                       |
| Disease State:                                    | Cancer                                |
| Diagnosis Category:                               | Colorectal Cancer                     |
| Tissue:   | Colon                                 |
| Frozen Sample ID:                                 | FR65EE448C                            |
| Case ID:  | CI0000013459                          |
| Tissue of Origin:                                 | Colon: left                           |
| Site of Finding:                                  | Colon: left                           |
| Appearance:                                       | T                                     |
| Sample Diagnosis (from Pathology Verification):   | Adenocarcinoma of colon               |
| Normal:   | 5%                                    |
| Lesional:   | 0%                                    |
| Tumor:  | 65%                                   |
| Tumor Hypo/Acellular Stroma:                      | 20%                                   |
| Tumor Hypercellular Stroma:                       | 10%                                   |
| Necrosis:   | 0%                                    |
| Pathology Verification notes from H&E review:     | Tumor Stroma (Hypo/Acellular): Myxoid |
| CASE Diagnosis (from medical center path report): | Adenocarcinoma of colon               |
| Age:  | 64                                    |
| Gender:   | Male                                  |
| Race:   | White or Caucasian                    |

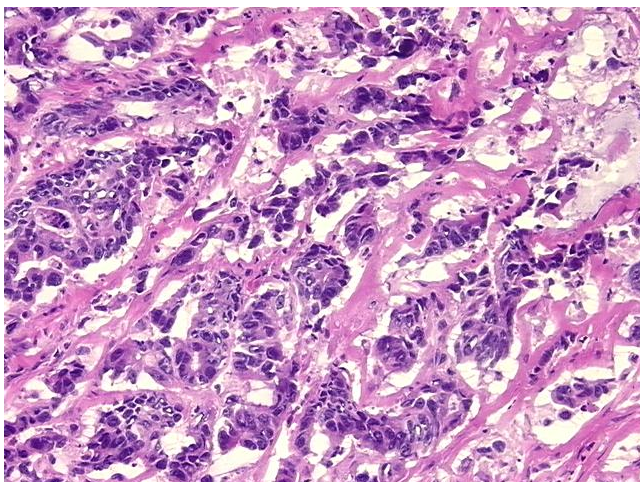


[View online »](#)

|                              |  |
|------------------------------|--|
| Tumor Grade:                 | AJCC G1: Well differentiated   |
| Minimum Stage Grouping:      | IIIC   |
| T (Extent of Primary Tumor): | T4   |
| N (Lymph node metastasis):   | N2   |
| M (Distant metastasis):      | MX   |
| Storage:                     | Store frozen tissue sections at -80°C.   |
| Stability:                   | All frozen tissue sections are stable for 1 year from date of purchase if stored at -80°C without repeated freeze/thaws. |

**Product images:**

4x Image



20x Image