

Product datasheet for **CS534040**

Frozen Tissue Sections, Lung

Product data:

Product Type:	Frozen Sections
Disease State:	Other Disease
Diagnosis Category:	Pneumonia
Tissue:	Lung
Frozen Sample ID:	FR65EE44EC
Case ID:	CI0000013451
Tissue of Origin:	Lung
Site of Finding:	Lung
Appearance:	L
Sample Diagnosis (from Pathology Verification):	Pneumonia, post-obstructive
Normal:	0%
Lesional:	100%
Tumor:	0%
Tumor Hypo/Acellular Stroma:	0%
Tumor Hypercellular Stroma:	0%
Necrosis:	0%
Pathology Verification notes from H&E review:	Non Tumor Structures: 100% No normal architecture



[View online »](#)

CASE Diagnosis (from medical center path report): Carcinoma of lung, non-small cell

Age: 65

Gender: Male

Race: White or Caucasian

Tumor Grade: AJCC G3: Poorly differentiated

Minimum Stage Grouping: IB

T (Extent of Primary Tumor): T2

N (Lymph node metastasis): N0

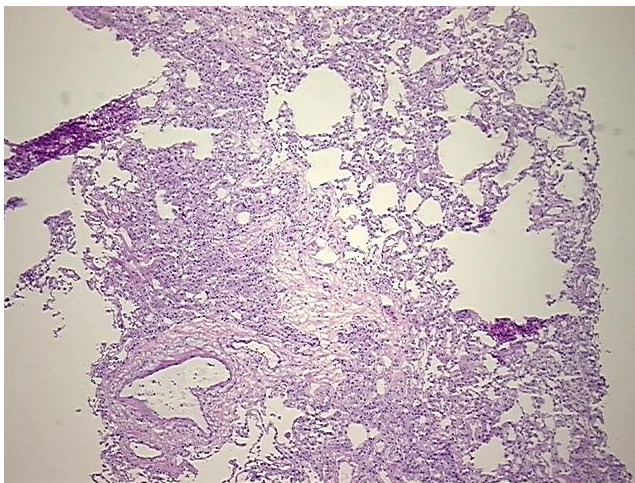
M (Distant metastasis): MX

Diagnostic Test Results: Cytokeratin 7 ~ CK7 ! by IHC,Negative; Cytokeratin 20 ~ CK20 ! by IHC,Positive; Thyroid transcription factor 1 ~ TTF1 ! by IHC,Negative

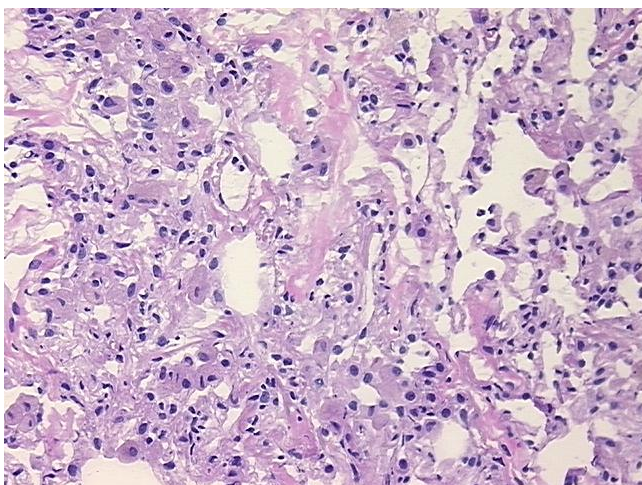
Storage: Store frozen tissue sections at -80°C.

Stability: All frozen tissue sections are stable for 1 year from date of purchase if stored at -80°C without repeated freeze/thaws.

Product images:



4x Image



20x Image