

Product datasheet for **CS533985**

Frozen Tissue Sections, Breast

Product data:

Product Type:	Frozen Sections
Disease State:	Other Disease
Diagnosis Category:	Fibrocystic Breast
Tissue:	Breast
Frozen Sample ID:	FR6A38B55E
Case ID:	CI0000013441
Tissue of Origin:	Breast
Site of Finding:	Breast
Appearance:	L
Sample Diagnosis (from Pathology Verification):	Fibrocystic breast disease
Normal:	60%
Lesional:	40%
Tumor:	0%
Tumor Hypo/Acellular Stroma:	0%
Tumor Hypercellular Stroma:	0%
Necrosis:	0%
Pathology Verification notes from H&E review:	Non Tumor Structures: 40% Glandular epithelium, 40% Stroma, 20% Adipose tissue
CASE Diagnosis (from medical center path report):	Ductal hyperplasia of breast, atypical
Age:	45
Gender:	Female
Race:	White or Caucasian

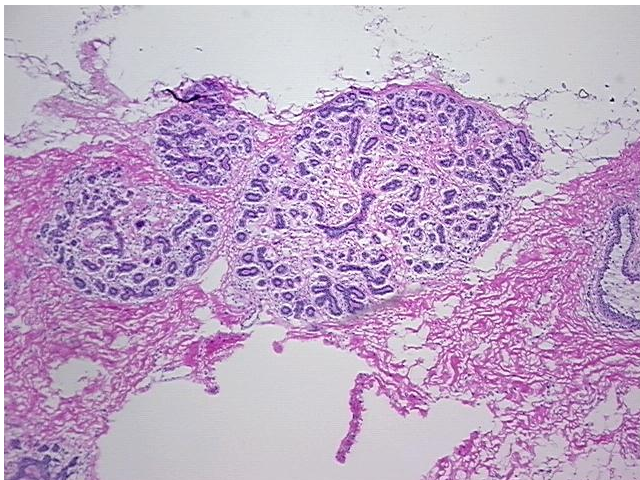


[View online »](#)

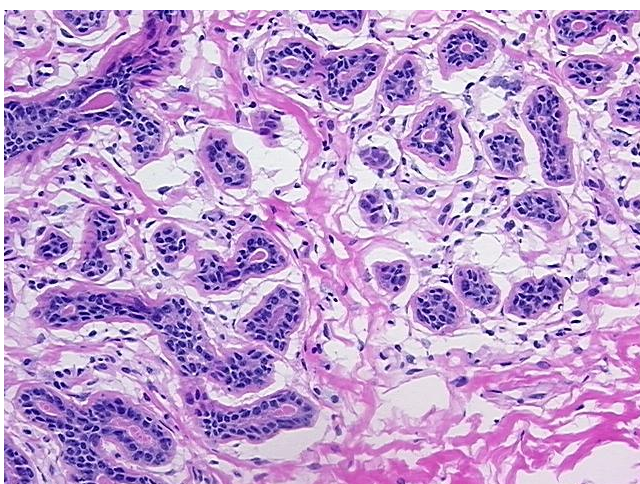
Storage: Store frozen tissue sections at -80°C.

Stability: All frozen tissue sections are stable for 1 year from date of purchase if stored at -80°C without repeated freeze/thaws.

Product images:



4x Image



20x Image