

## Product datasheet for **CS533978**

### Frozen Tissue Sections, Breast

#### Product data:

Product Type:	Frozen Sections
Disease State:	Normal
Diagnosis Category:	Normal
Tissue:	Breast
Frozen Sample ID:	FR65EE45F2
Case ID:	CI0000013441
Tissue of Origin:	Breast
Site of Finding:	Breast
Appearance:	R
Sample Diagnosis (from Pathology Verification):	Within normal limits
Normal:	100%
Lesional:	0%
Tumor:	0%
Tumor Hypo/Acellular Stroma:	0%
Tumor Hypercellular Stroma:	0%
Necrosis:	0%
Pathology Verification notes from H&E review:	Non Tumor Structures: 60% Glandular epithelium, 20% Stroma, 20% Adipose tissue



**CASE Diagnosis (from medical center path report):** Ductal hyperplasia of breast, atypical

**Age:** 45

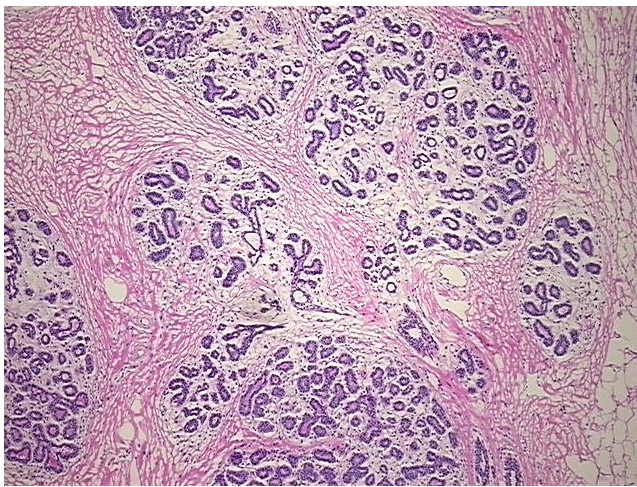
**Gender:** Female

**Race:** White or Caucasian

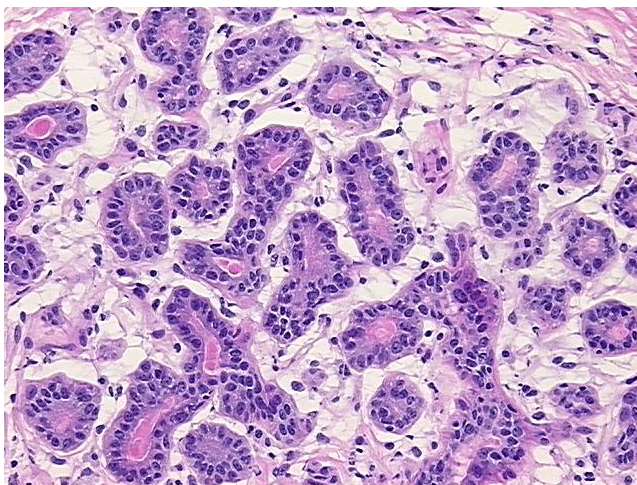
**Storage:** Store frozen tissue sections at -80°C.

**Stability:** All frozen tissue sections are stable for 1 year from date of purchase if stored at -80°C without repeated freeze/thaws.

**Product images:**



4x Image



20x Image