

Product datasheet for **CS533903**

Frozen Tissue Sections, Colon: left

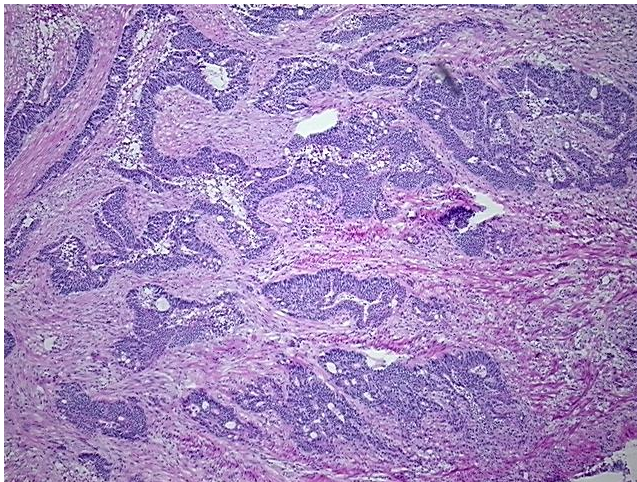
Product data:

| | |
|---|------------------------------------|
| Product Type: | Frozen Sections |
| Disease State: | Cancer |
| Diagnosis Category: | Colorectal Cancer |
| Tissue: | Colon |
| Frozen Sample ID: | FR5B341AAC |
| Case ID: | CI0000013411 |
| Tissue of Origin: | Colon: left |
| Site of Finding: | Colon: left |
| Appearance: | T |
| Sample Diagnosis (from Pathology Verification): | Adenocarcinoma of colon, recurrent |
| Normal: | 0% |
| Lesional: | 0% |
| Tumor: | 40% |
| Tumor Hypo/Acellular Stroma: | 0% |
| Tumor Hypercellular Stroma: | 15% |
| Necrosis: | 45% |
| CASE Diagnosis (from medical center path report): | Adenocarcinoma of colon, recurrent |

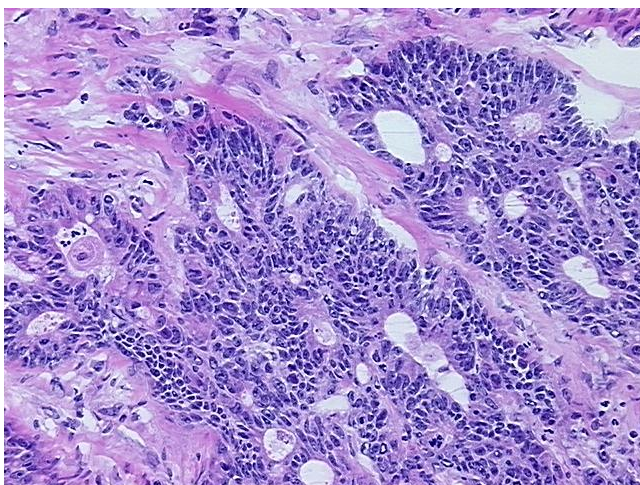


| | |
|-------------------------------------|--|
| Age: | 63 |
| Gender: | Female |
| Race: | White or Caucasian |
| Tumor Grade: | AJCC G2: Moderately differentiated |
| Minimum Stage Grouping: | IV |
| T (Extent of Primary Tumor): | T3 |
| N (Lymph node metastasis): | N0 |
| M (Distant metastasis): | M1 |
| Storage: | Store frozen tissue sections at -80°C. |
| Stability: | All frozen tissue sections are stable for 1 year from date of purchase if stored at -80°C without repeated freeze/thaws. |

Product images:



4x Image



20x Image