

Product datasheet for **CS533888**

Frozen Tissue Sections, Breast

Product data:

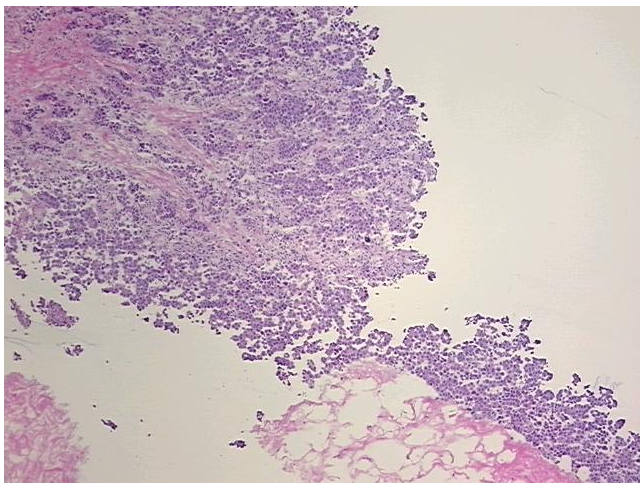
| | |
|---|---|
| Product Type: | Frozen Sections |
| Disease State: | Cancer |
| Diagnosis Category: | Breast Cancer |
| Tissue: | Breast |
| Frozen Sample ID: | FR00034E55 |
| Case ID: | CI0000013410 |
| Tissue of Origin: | Breast |
| Site of Finding: | Breast |
| Appearance: | T |
| Sample Diagnosis (from Pathology Verification): | Adenocarcinoma of breast, ductal |
| Normal: | 75% |
| Lesional: | 0% |
| Tumor: | 20% |
| Tumor Hypo/Acellular Stroma: | 0% |
| Tumor Hypercellular Stroma: | 5% |
| Necrosis: | 0% |
| Pathology Verification notes from H&E review: | Tumor Stroma (Cellular): Desmoplastic reaction; Non Tumor Structures: 5% Glandular epithelium, 60% Stroma, 35% Adipose tissue |
| CASE Diagnosis (from medical center path report): | Adenocarcinoma of breast, ductal |
| Age: | 60 |
| Gender: | Female |
| Race: | White or Caucasian |



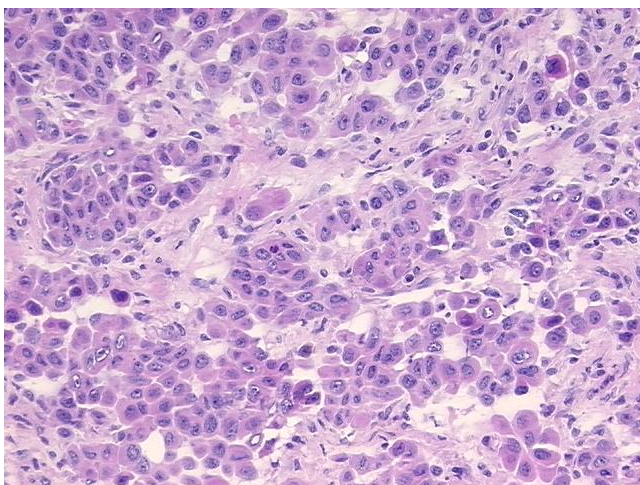
[View online »](#)

| | |
|-------------------------------------|--|
| Tumor Grade: | Nottingham G2: 6-7 points Intermediate combined grade (moderately favorable) |
| Minimum Stage Grouping: | IIA |
| T (Extent of Primary Tumor): | T1c |
| N (Lymph node metastasis): | N1a |
| M (Distant metastasis): | MX |
| Diagnostic Test Results: | Progesterone receptor ~ PR ! by IHC,Positive; Estrogen receptor ~ ER ! by IHC,Positive; HER2 ~ ERBB2 ~ Neu ! by IHC,Negative |
| Storage: | Store frozen tissue sections at -80°C. |
| Stability: | All frozen tissue sections are stable for 1 year from date of purchase if stored at -80°C without repeated freeze/thaws. |

Product images:



4x Image



20x Image