

## Product datasheet for **CS533842**

### Frozen Tissue Sections, Endometrium

#### Product data:

Product Type:	Frozen Sections
Disease State:	Cancer
Diagnosis Category:	Endometrial Cancer
Tissue:	Endometrium
Frozen Sample ID:	FR5B33C0CF
Case ID:	CI0000013352
Tissue of Origin:	Endometrium
Site of Finding:	Omentum
Appearance:	T
Sample Diagnosis (from Pathology Verification):	Carcinoma of endometrium, metastatic
Normal:	20%
Lesional:	0%
Tumor:	45%
Tumor Hypo/Acellular Stroma:	0%
Tumor Hypercellular Stroma:	30%
Necrosis:	5%
Pathology Verification notes from H&E review:	Tumor Stroma (Cellular): Desmoplastic reaction; Other Features/Comments: Tumor: poorly differentiated endometrial carcinoma with squamous differentiation, Tumor area: 6 mm x 6 mm



**CASE Diagnosis (from medical center path report):** Carcinoma of endometrium, squamous cell

**Age:** 57

**Gender:** Female

**Race:** White or Caucasian

**Tumor Grade:** FIGO G3: Poorly differentiated

**Minimum Stage Grouping:** IV

**T (Extent of Primary Tumor):** T3

**N (Lymph node metastasis):** NX

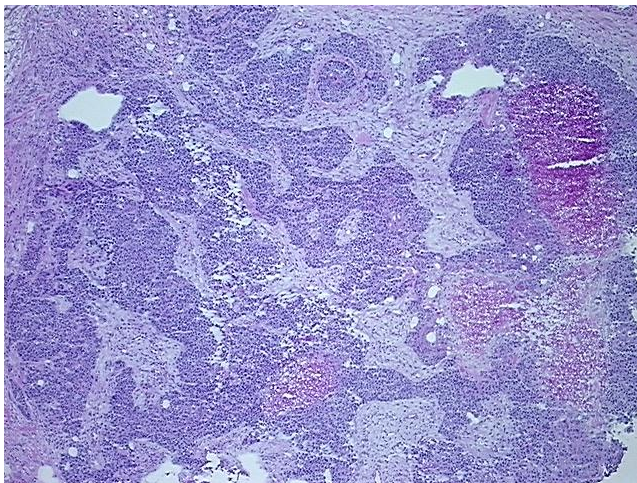
**M (Distant metastasis):** M1

**Diagnostic Test Results:** Progesterone receptor ~ PR ! by IHC,Positive; Estrogen receptor ~ ER ! by IHC,Negative

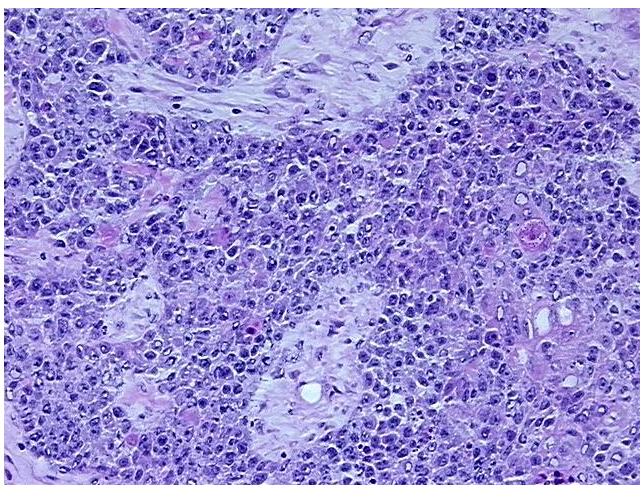
**Storage:** Store frozen tissue sections at -80°C.

**Stability:** All frozen tissue sections are stable for 1 year from date of purchase if stored at -80°C without repeated freeze/thaws.

**Product images:**



4x Image



20x Image