

## Product datasheet for CS533450

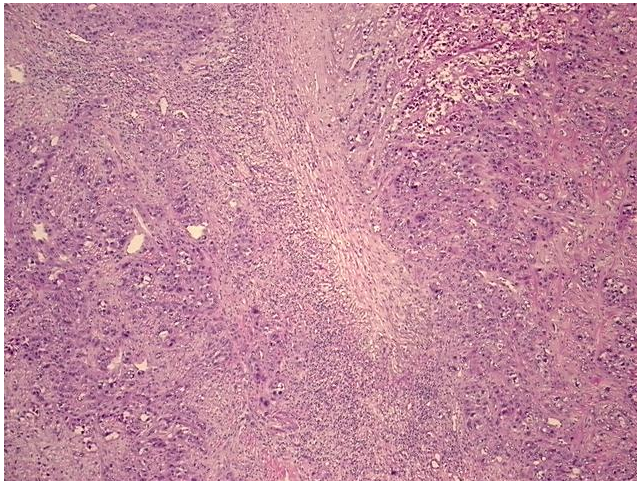
### Frozen Tissue Sections, Lung

#### Product data:

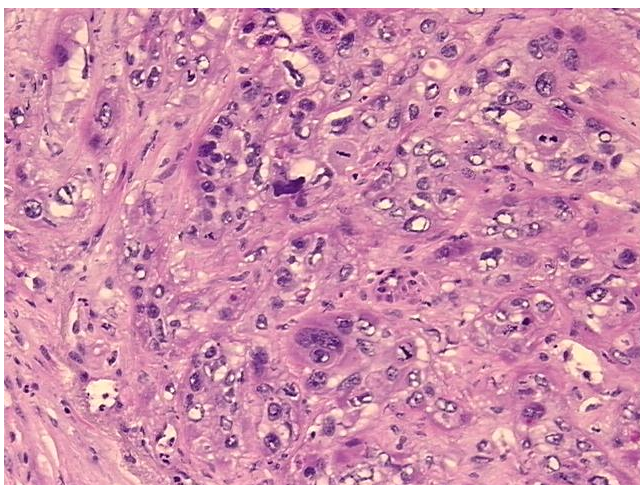
|   |  |
|---|--|
| Product Type:                                     | Frozen Sections                          |
| Disease State:                                    | Cancer                                   |
| Diagnosis Category:                               | Lung Cancer                              |
| Tissue:   | Lung                                     |
| Frozen Sample ID:                                 | FR5B33BDE2                               |
| Case ID:  | CI0000013305                             |
| Tissue of Origin:                                 | Lung                                     |
| Site of Finding:                                  | Lung                                     |
| Appearance:                                       | T  |
| Sample Diagnosis (from Pathology Verification):   | Carcinoma of lung, squamous cell (EGFR+) |
| Normal:   | 0%                                       |
| Lesional:   | 0%                                       |
| Tumor:  | 60%                                      |
| Tumor Hypo/Acellular Stroma:                      | 0%                                       |
| Tumor Hypercellular Stroma:                       | 0%                                       |
| Necrosis:   | 40%                                      |
| CASE Diagnosis (from medical center path report): | Carcinoma of lung, squamous cell         |
| Age:  | 75                                       |
| Gender:   | Female                                   |
| Race:   | White or Caucasian                       |
| Tumor Grade:                                      | AJCC G3: Poorly differentiated           |


[View online »](#)

|                                     |   |
|-------------------------------------|---|
| <b>Minimum Stage Grouping:</b>      | IB  |
| <b>T (Extent of Primary Tumor):</b> | T2  |
| <b>N (Lymph node metastasis):</b>   | N0  |
| <b>M (Distant metastasis):</b>      | MX  |
| <b>Diagnostic Test Results:</b>     | Verhoeff-Van Gieson ~ Elastin stain, Reported as Performed or Reviewed; ERBB1 ~ EGFR ~ Epidermal growth factor receptor ! by IHC, Positive, strong; HER2 ~ ERBB2 ~ Neu ! by IHC, Negative |
| <b>Storage:</b>                     | Store frozen tissue sections at -80°C.  |
| <b>Stability:</b>                   | All frozen tissue sections are stable for 1 year from date of purchase if stored at -80°C without repeated freeze/thaws.  |

**Product images:**


4x Image



20x Image