

Product datasheet for **CS533349**

Frozen Tissue Sections, Lung

Product data:

Product Type:	Frozen Sections
Disease State:	Cancer
Diagnosis Category:	Lung Cancer
Tissue:	Lung
Frozen Sample ID:	FR0002F7B5
Case ID:	CI0000013271
Tissue of Origin:	Lung
Site of Finding:	Lung
Appearance:	T
Sample Diagnosis (from Pathology Verification):	Adenocarcinoma of lung
Normal:	0%
Lesional:	60%
Tumor:	30%
Tumor Hypo/Acellular Stroma:	0%
Tumor Hypercellular Stroma:	10%
Necrosis:	0%
Pathology Verification notes from H&E review:	Lesion (60%): Pneumonia, post-obstructive 100%; Inflammation: Moderate Lymphoid infiltrate



CASE Diagnosis (from medical center path report): Adenocarcinoma of lung

Age: 74

Gender: Female

Race: White or Caucasian

Tumor Grade: AJCC G2: Moderately differentiated

Minimum Stage Grouping: IB

T (Extent of Primary Tumor): T2

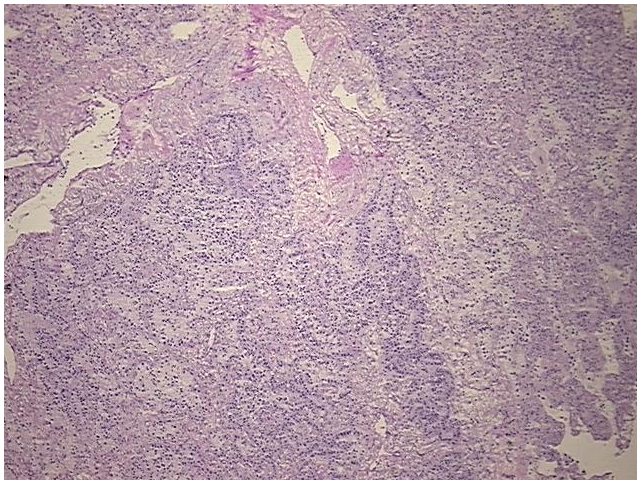
N (Lymph node metastasis): N0

M (Distant metastasis): MX

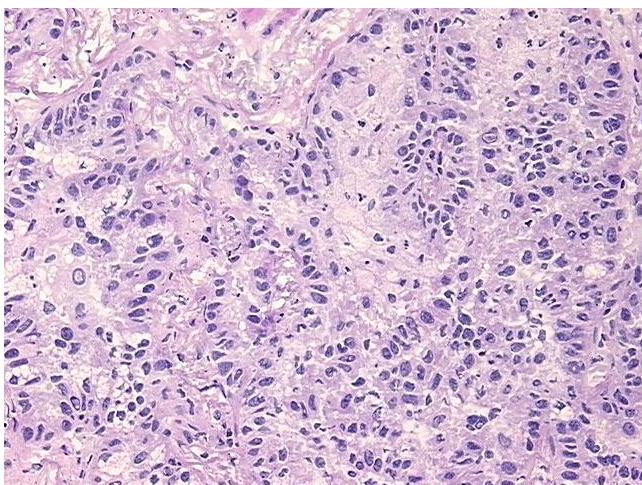
Storage: Store frozen tissue sections at -80°C.

Stability: All frozen tissue sections are stable for 1 year from date of purchase if stored at -80°C without repeated freeze/thaws.

Product images:



4x Image



20x Image