

Product datasheet for **CS533143**

Frozen Tissue Sections, Colon

Product data:

Product Type:	Frozen Sections
Disease State:	Normal
Diagnosis Category:	Normal
Tissue:	Colon
Frozen Sample ID:	FR65EE22FB
Case ID:	CI0000013229
Tissue of Origin:	Colon
Site of Finding:	Colon
Appearance:	R
Sample Diagnosis (from Pathology Verification):	Within normal limits
Normal:	100%
Lesional:	0%
Tumor:	0%
Tumor Hypo/Acellular Stroma:	0%
Tumor Hypercellular Stroma:	0%
Necrosis:	0%
Pathology Verification notes from H&E review:	Non Tumor Structures: 20% Mucosa, 20% Submucosa, 60% Muscle



[View online »](#)

CASE Diagnosis (from medical center path report): Adenocarcinoma of ovary, serous

Age: 58

Gender: Female

Race: White or Caucasian

Tumor Grade: FIGO G3: Poorly differentiated

Minimum Stage Grouping: IIIC

T (Extent of Primary Tumor): T3c

N (Lymph node metastasis): N1

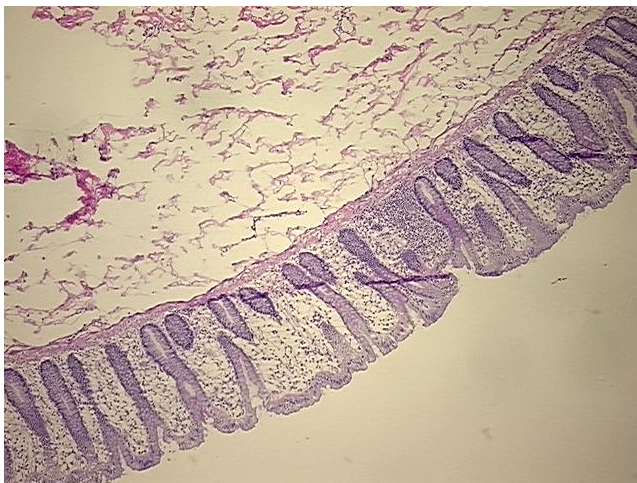
M (Distant metastasis): MX

Diagnostic Test Results: Synaptophysin ~ SYN ! by IHC,Negative; Cytokeratin 7 ~ CK7 ! by IHC,Positive; Cytokeratin 20 ~ CK20 ! by IHC,Negative; Chromogranin A ~ Parathyroid secretory protein 1 ! by IHC,Negative; Tumor associated glycoprotein-72 ~ TAG-72 ~ B72.3 antige

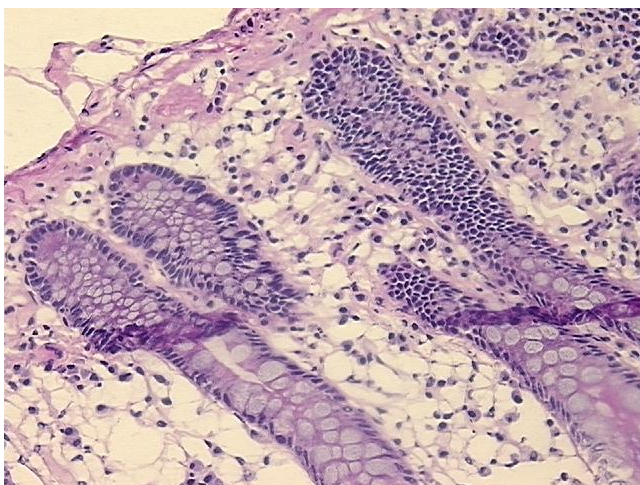
Storage: Store frozen tissue sections at -80°C.

Stability: All frozen tissue sections are stable for 1 year from date of purchase if stored at -80°C without repeated freeze/thaws.

Product images:



4x Image



20x Image