

Product datasheet for **CS533081**

Frozen Tissue Sections, Soft tissue

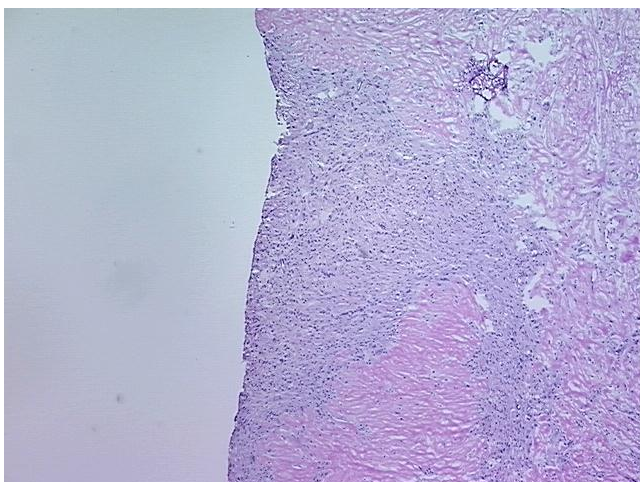
Product data:

| | |
|---|--|
| Product Type: | Frozen Sections |
| Disease State: | Cancer |
| Diagnosis Category: | Sarcoma |
| Tissue: | Soft tissue |
| Frozen Sample ID: | FR00030013 |
| Case ID: | CI0000013217 |
| Tissue of Origin: | Soft tissue |
| Site of Finding: | Mesentery |
| Appearance: | T |
| Sample Diagnosis (from Pathology Verification): | Histiocytoma, malignant fibrous |
| Normal: | 0% |
| Lesional: | 0% |
| Tumor: | 35% |
| Tumor Hypo/Acellular Stroma: | 65% |
| Tumor Hypercellular Stroma: | 0% |
| Necrosis: | 0% |
| Pathology Verification notes from H&E review: | Tumor Stroma (Hypo/Acellular): Hyalinization |
| CASE Diagnosis (from medical center path report): | Histiocytoma, malignant fibrous |
| Age: | 46 |
| Gender: | Male |
| Race: | White or Caucasian |

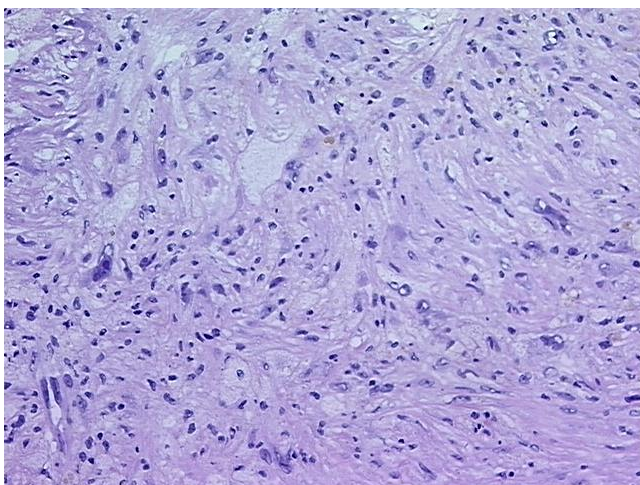


[View online »](#)

| | |
|-------------------------------------|--|
| Tumor Grade: | AJCC G3: Poorly differentiated |
| Minimum Stage Grouping: | Not Reported |
| T (Extent of Primary Tumor): | Not Reported |
| N (Lymph node metastasis): | Not Reported |
| M (Distant metastasis): | Not Reported |
| Diagnostic Test Results: | PAS ~ Periodic acid-Schiff stain,Negative; Acid-fast bacteria ~ AFB ~ Ziehl-Neelsen acid fast,Negative |
| Storage: | Store frozen tissue sections at -80°C. |
| Stability: | All frozen tissue sections are stable for 1 year from date of purchase if stored at -80°C without repeated freeze/thaws. |

Product images:

4x Image



20x Image